

RECEIVED AND DEPOSITED
DATE JULY 14, 2022
DATE JULY 15, 2022

REPRESENTATIVE FOR LAND REGISTRAR FOR THE LAND TITLES DIVISION OF BRUCE (No. 3)

SCHEDULE
PARTS 1 TO 18
BLOCK 38
PIN 33246-0915(LT)

PARTS 1 TO 18, INCLUSIVE, COMPRISE ALL OF PIN 33246-0915(LT) PARTS 16 AND 17 ARE SUBJECT TO AN EASEMENT IN GROSS AS IN BR139834 PARTS 1 TO 18, INCLUSIVE, ARE SUBJECT TO AN EASEMENT IN GROSS AS IN BR180088 AND AN EASEMENT IN GROSS AS IN BR180913

1 REQUIRE THIS PLAN TO BE DEPOSITED UNDER THE LAND TITLES ACT.
DATE JULY 14, 2022

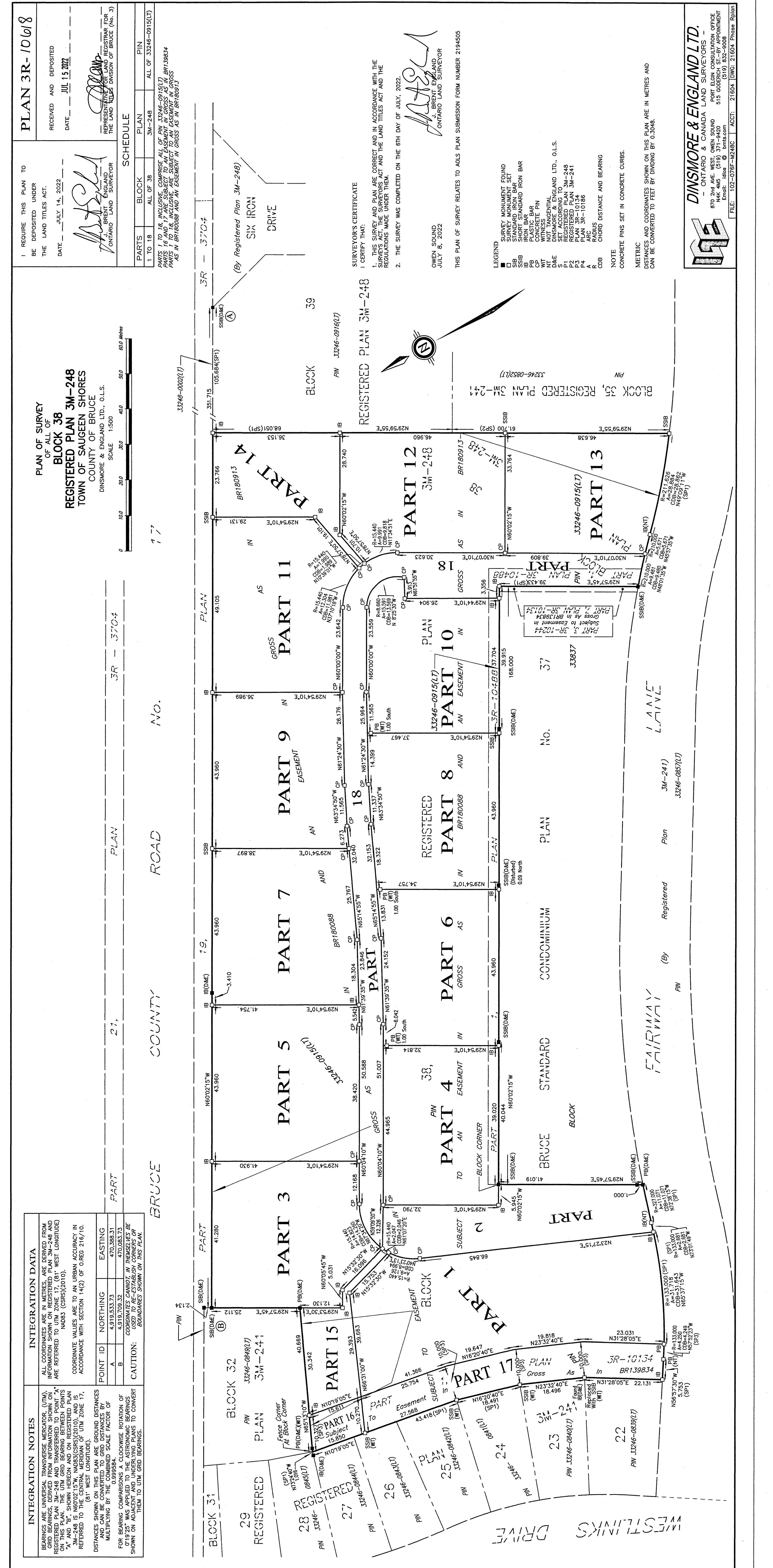
1 THIS SURVEY AND PLAN ARE CORRECT AND IN ACCORDANCE WITH THE REGULATIONS MADE UNDER THEM.
2 THE SURVEY WAS COMPLETED ON THE 6TH DAY OF JULY, 2022.

SURVEYOR'S CERTIFICATE
I CERTIFY THAT:
1. THIS SURVEY AND PLAN ARE CORRECT AND IN ACCORDANCE WITH THE REGULATIONS MADE UNDER THEM.
2. THE SURVEY WAS COMPLETED ON THE 6TH DAY OF JULY, 2022.

OWEN SOUND
JULY 8, 2022
THIS PLAN OF SURVEY RELATES TO AGLS PLAN SUBMISSION FORM NUMBER 2194505

LEGEND
SURVEY MONUMENT FOUND
STANDARD IRON BAR
SHORT STANDARD IRON BAR
PLASTIC BAR
CONCRETE PIN
WITNESS
DINSMORE & ENGLAND LTD., O.L.S.
SET ACCORDING TO
REGISTERED PLAN 3M-248
REGISTERED PLAN 3M-241
PLAN 3R-10186
ARC
RADIUS
CHORD DISTANCE AND BEARING
NOTE
CONCRETE PINS SET IN CONCRETE CURBS.
METRIC
DISTANCES AND COORDINATES SHOWN ON THIS PLAN ARE IN METRES AND CAN BE CONVERTED TO FEET BY DIVIDING BY 0.3048.

DINSMORE & ENGLAND LTD.
- ONTARIO & CANADA LAND SURVEYORS -
870 2nd AVE. WEST, OWEN SOUND
PORT ELM CONSULTATION OFFICE
515 GODERICH ST., BY APPOINTMENT
Email: info@bmes.com (519) 371-9420
(519) 832-9008
FILE: 102-0767-0248C ACCT: 21604 DWG: 21604 Phase Rplan



INTEGRATION NOTES

BEARINGS ARE UNIVERSAL TRANSVERSE MERCATOR (UTM). COORDINATES ARE IN METRES. ARE DERIVED FROM NAD83 (CSRS)(2010). COORDINATE VALUES ARE TO AN URBAN ACCURACY IN 0.1925" WAS APPLIED TO THE ASTROMERIC BEARINGS SHOWN ON ADJACENT AND UNDERLYING PLANS TO CONVERT THEM TO UTM GRID BEARINGS.

INTEGRATION DATA

POINT ID	NORTHING	EASTING
A	4,919,533.73	470,388.31
B	4,919,709.32	470,083.73

CAUTION: COORDINATES CANNOT BE USED TO RE-ESTABLISH CORNERS OR BOUNDARIES SHOWN ON THIS PLAN.

INTEGRATION DATA

ALL COORDINATES ARE IN METRES. ARE DERIVED FROM NAD83 (CSRS)(2010). COORDINATE VALUES ARE TO AN URBAN ACCURACY IN 0.1925" WAS APPLIED TO THE ASTROMERIC BEARINGS SHOWN ON ADJACENT AND UNDERLYING PLANS TO CONVERT THEM TO UTM GRID BEARINGS.

POINT ID NORTHING EASTING

A	4,919,533.73	470,388.31
B	4,919,709.32	470,083.73

CAUTION: COORDINATES CANNOT BE USED TO RE-ESTABLISH CORNERS OR BOUNDARIES SHOWN ON THIS PLAN.