

Firefighter Dispatch Response Times

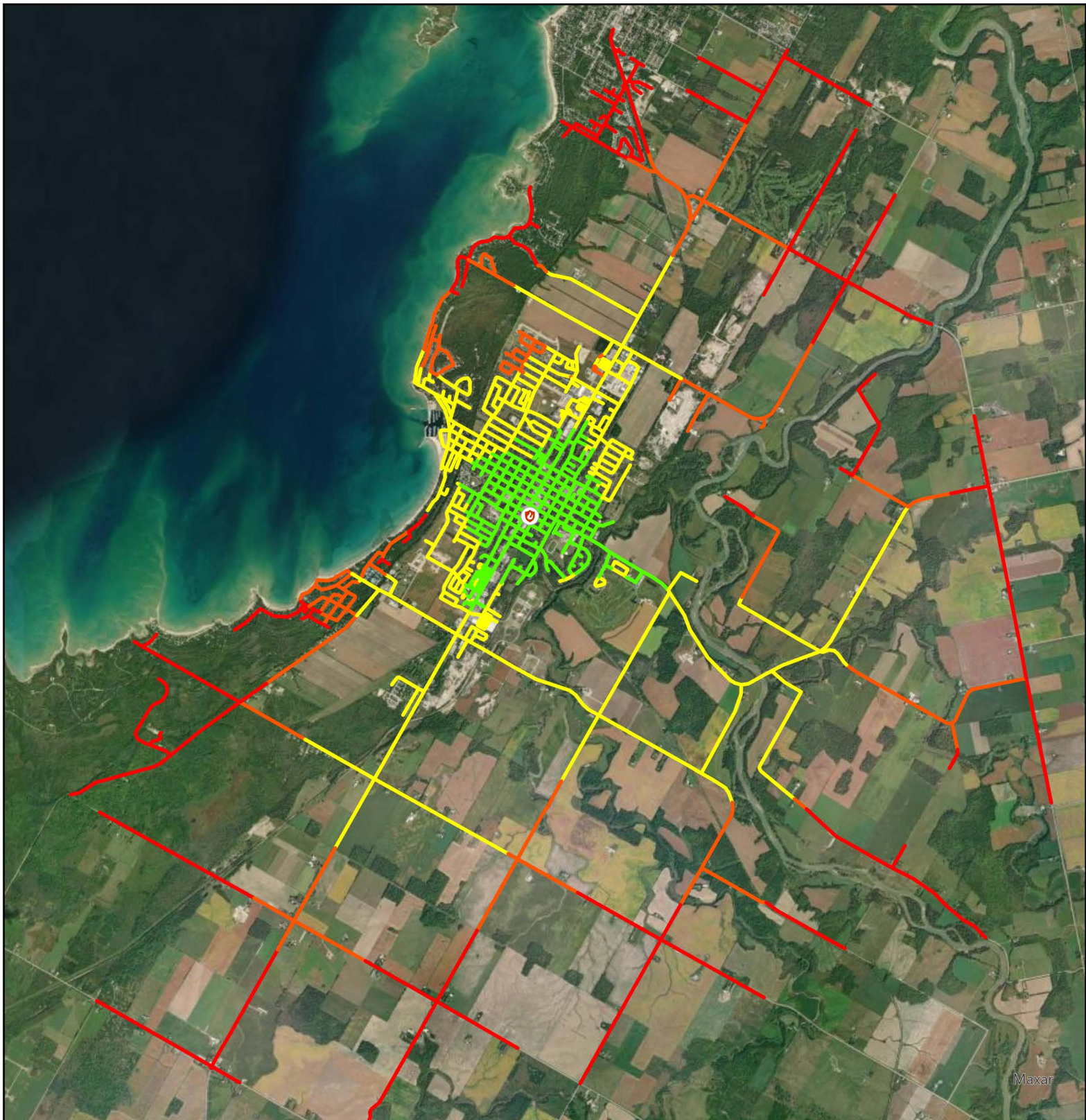
Current Station #50

% Of Firefighters Able To Respond in 10 Minutes

- 100%
- 75%
- 50%
- 25%

Road Length >50% Of Firefighters Able to Reach in 10 Minutes

129km



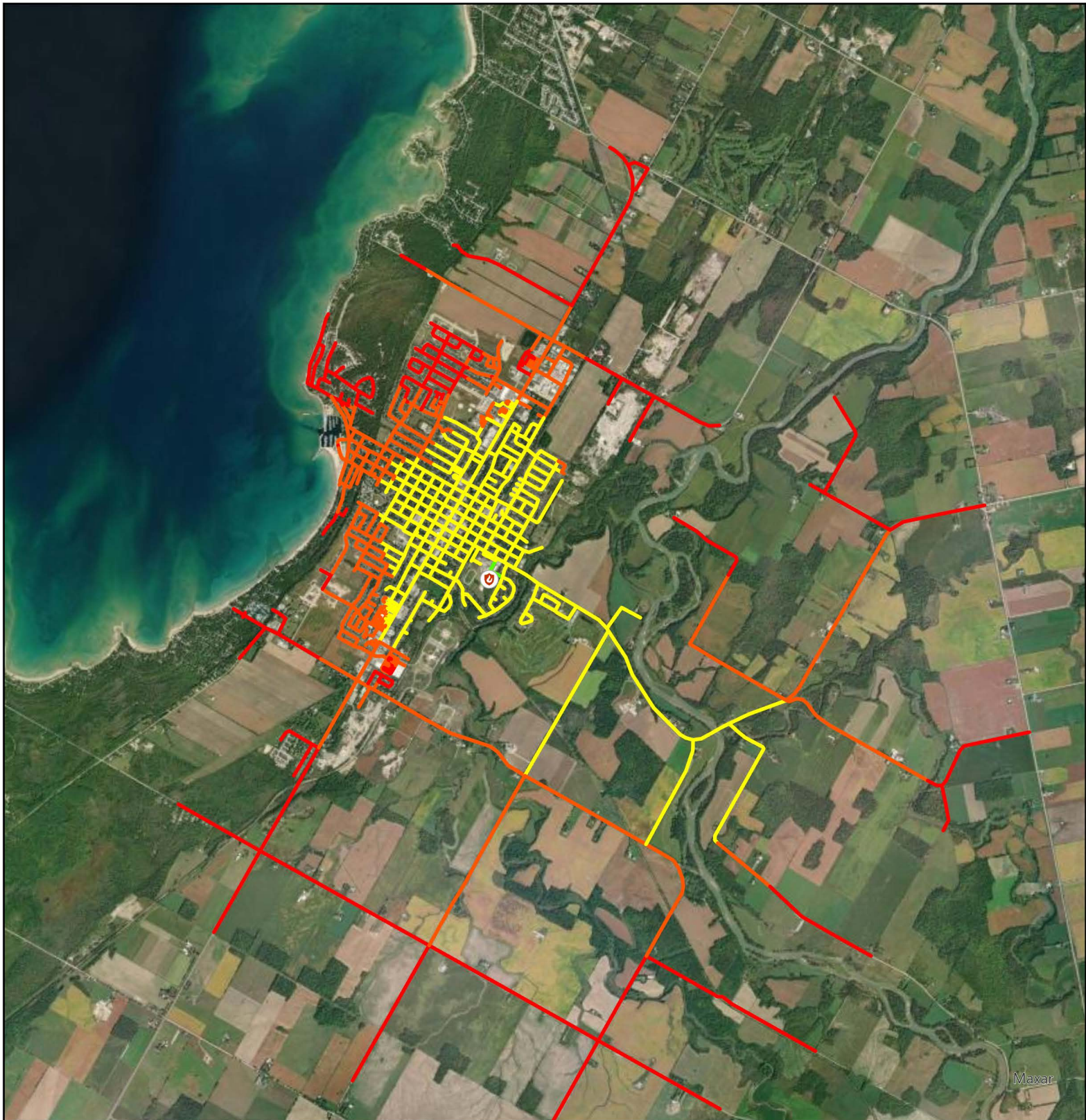
Firefighter Dispatch Response Times
Current Station #60

% Of Firefighters Able To Respond in 10 Minutes

- 100%
- 75%
- 50%
- 25%

Road Length >50% Of Firefighters Able to Reach in 10 Minutes

166km



Firefighter Dispatch Response Times

Proposed Station #60

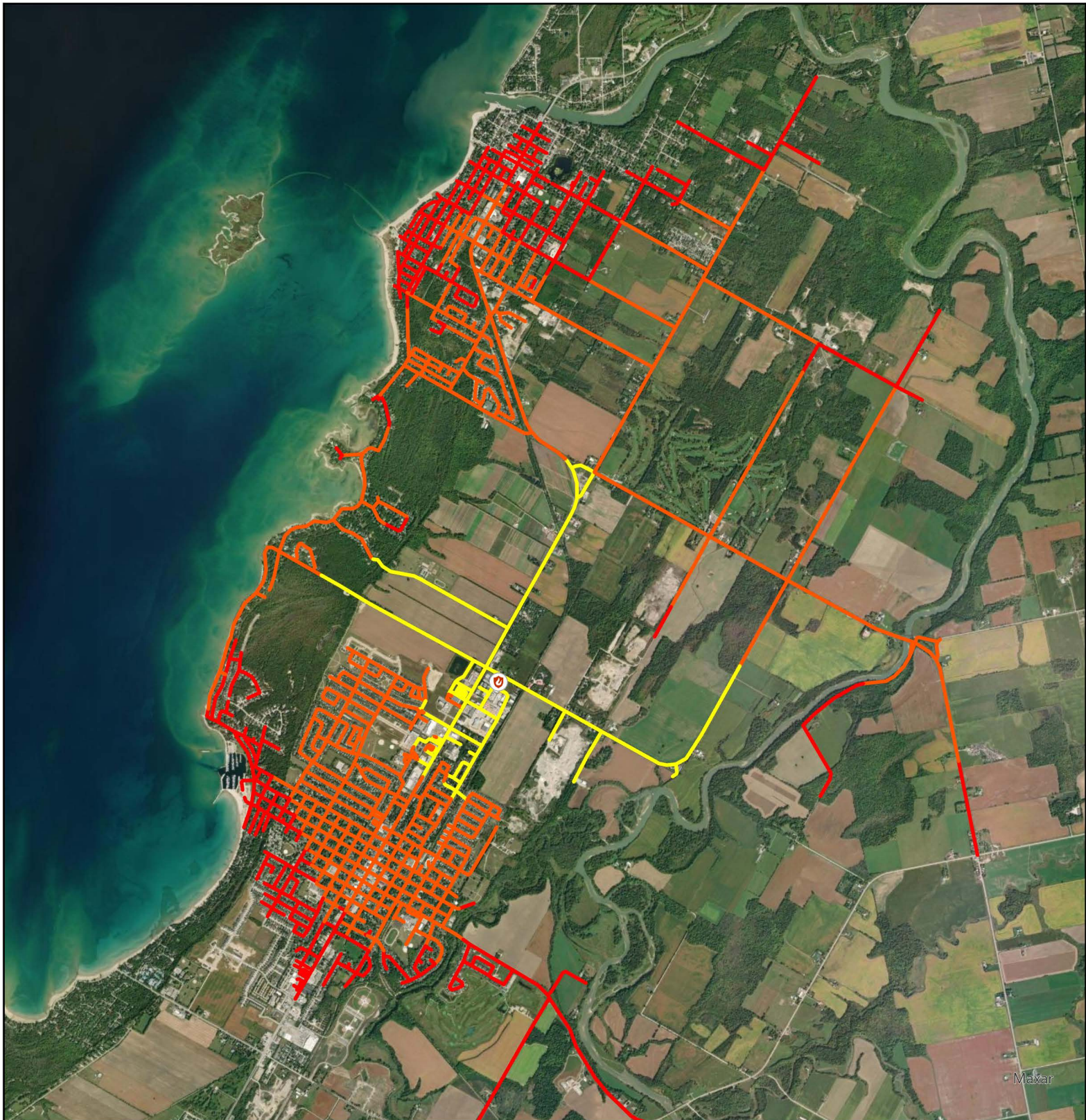
640 Mill Creek Rd

% Of Firefighters Able To Respond in 10 Minutes

- 100%
- 75%
- 50%
- 25%

Road Length >50% Of Firefighters Able to Reach in 10 Minutes

110km



Firefighter Dispatch Response Times

Proposed Station #60

1240 Mackenzie Rd

Response times from current Station #60 firefighters

% Of Firefighters Able To Respond
in 10 Minutes

- 75%
- 50%
- 25%

3 firefighters not able to reach station
within 10 minutes

Road Length >50% Of
Firefighters Able to Reach in
10 Minutes

118km



Firefighter Dispatch Response Times

Proposed Amalgamated Station

1240 Mackenzie Rd

Response times from current Station #50 firefighters

**% Of Firefighters Able To Respond
in 10 Minutes**

- 75%
- 50%
- 25%

*1 firefighter not able to reach station
within 10 minutes*

**Road Length >50% Of
Firefighters Able to Reach in
10 Minutes**

66km

Maxar