

PLAN OF SURVEY OF PART OF
LOT 12
CONCESSION 9
(GEOGRAPHIC TOWNSHIP OF SAUGEEN)
TOWN OF SAUGEEN SHORES
COUNTY OF BRUCE

SCALE 1 : 1250
 20m 10 0m 20 40 60 80m
 Metres

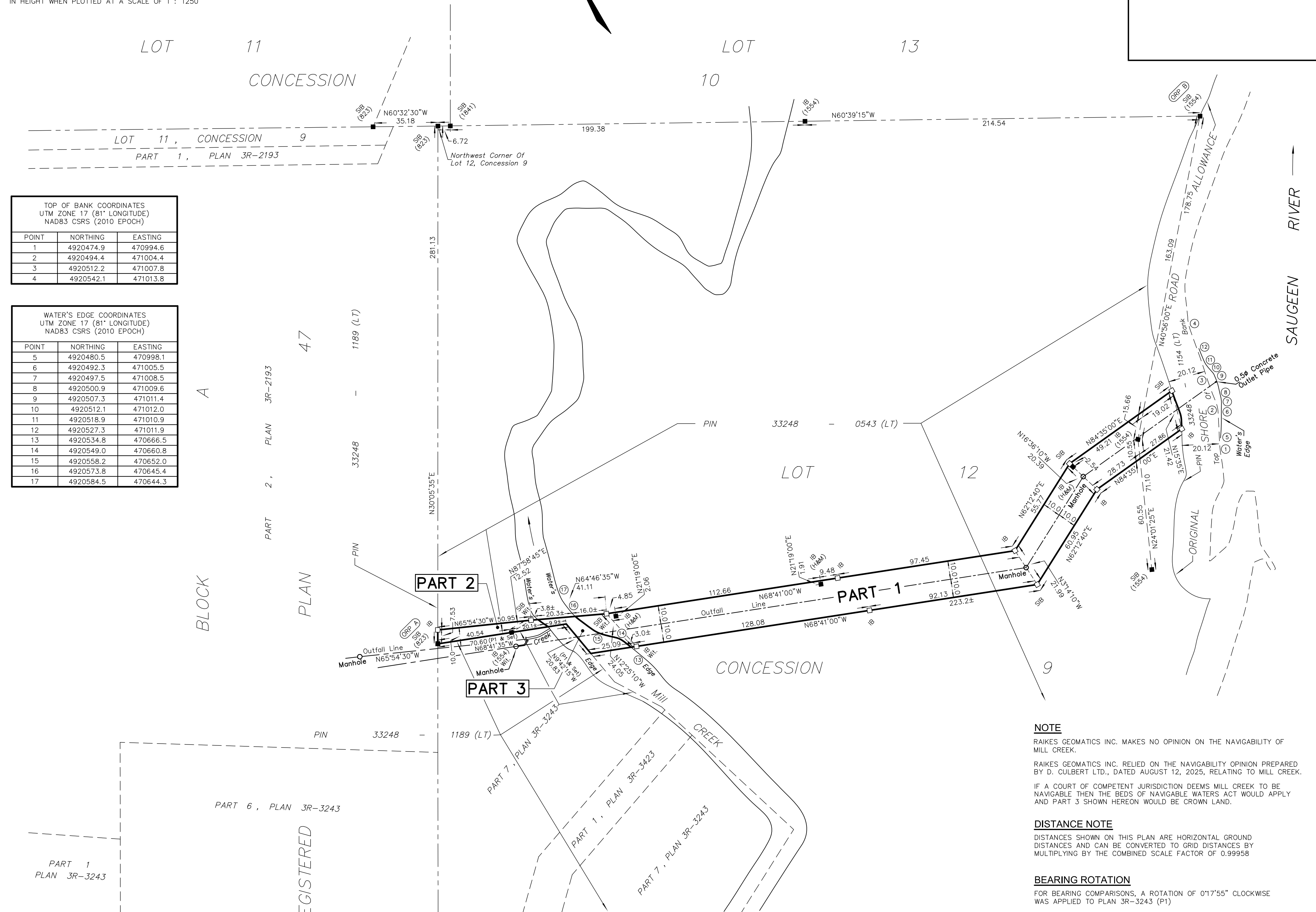
RAIKES GEOMATICS INC.
 2025

THE INTENDED PLOT SIZE OF THIS PLAN IS 610mm IN WIDTH BY 610mm
 IN HEIGHT WHEN PLOTTED AT A SCALE OF 1 : 1250

SCHEDULE				
PART	LOT	CONCESSION	PIN	AREA
1				0.709 Ha.
2	PART OF LOT 12	9	33248-0543(LT)	349 Sqm.
3				344 Sqm.

PARTS 1, 2 AND 3 - COMPRISE PART OF 33248-0543(LT)

DRAFT



TOP OF BANK COORDINATES UTM ZONE 17 (81° LONGITUDE) NAD83 CSRS (2010 EPOCH)		
POINT	NORTHING	EASTING
1	4920474.9	470994.6
2	4920494.4	471004.4
3	4920512.2	471007.8
4	4920542.1	471013.8

WATER'S EDGE COORDINATES UTM ZONE 17 (81° LONGITUDE) NAD83 CSRS (2010 EPOCH)		
POINT	NORTHING	EASTING
5	4920480.5	470998.1
6	4920492.3	471005.5
7	4920497.5	471008.5
8	4920500.9	471009.6
9	4920507.3	471011.4
10	4920512.1	471012.0
11	4920518.9	471010.9
12	4920527.3	471011.9
13	4920534.8	470666.5
14	4920549.0	470660.8
15	4920558.2	470652.0
16	4920573.8	470645.4
17	4920584.5	470644.3

NOTE
 RAIKES GEOMATICS INC. MAKES NO OPINION ON THE NAVIGABILITY OF MILL CREEK.
 RAIKES GEOMATICS INC. RELIED ON THE NAVIGABILITY OPINION PREPARED BY D. CULBERT LTD., DATED AUGUST 12, 2025, RELATING TO MILL CREEK.
 IF A COURT OF COMPETENT JURISDICTION DEEMS MILL CREEK TO BE NAVIGABLE THEN THE BEDS OF NAVIGABLE WATERS ACT WOULD APPLY AND PART 3 SHOWN HEREON WOULD BE CROWN LAND.

DISTANCE NOTE
 DISTANCES SHOWN ON THIS PLAN ARE HORIZONTAL GROUND DISTANCES AND CAN BE CONVERTED TO GRID DISTANCES BY MULTIPLYING BY THE COMBINED SCALE FACTOR OF 0.99958

BEARING ROTATION
 FOR BEARING COMPARISONS, A ROTATION OF 0°17'55" CLOCKWISE WAS APPLIED TO PLAN 3R-3243 (P1)

BEARING NOTE
 BEARINGS HEREON ARE UTM GRID BEARINGS AND ARE DERIVED FROM OBSERVED REFERENCE POINTS (ORPs) A AND B BY REAL TIME NETWORK (RTN) OBSERVATIONS AND ARE REFERRED TO THE CENTRAL MERIDIAN 81°W IN ZONE 17 BASED ON NAD83 (CSRS) (2010 EPOCH).

REVISION TABLE		
DATE	BY	COMMENT
JANUARY 10, 2025	BP	DRAFT - ADDED PARTS 1 AND 2
JANUARY 31, 2025	BP	DRAFT - ADDED MONUMENTS RELEASED FOR MNR REVIEW
AUGUST 27, 2025	BP	DRAFT - ADDED PART 3

SURVEYOR'S CERTIFICATE
 I CERTIFY THAT:
 1. THIS SURVEY AND PLAN ARE CORRECT AND IN ACCORDANCE WITH THE SURVEYS ACT, SURVEYORS ACT, THE LAND TITLES ACT AND THE REGULATIONS MADE UNDER THEM.
 2. THE SURVEY WAS COMPLETED ON THE 29th DAY OF JANUARY 2025

JANUARY 31, 2025
 DATE
 PETER T. RAIKES, B.Sc., CLS., MRICS.
 ONTARIO LAND SURVEYOR

THIS PLAN OF SURVEY RELATES TO AOLS PLAN SUBMISSION FORM NUMBER XXXX

METRIC
 DISTANCES AND COORDINATES SHOWN ON THIS PLAN ARE IN METRES AND CAN BE CONVERTED TO FEET BY DIVIDING BY 0.3048

LEGEND
 ■ DENOTES MONUMENT FOUND
 □ DENOTES MONUMENT PLANTED
 IB DENOTES IRON BAR
 SIB DENOTES STANDARD IRON BAR
 SSIB DENOTES SHORT STANDARD IRON BAR
 (823) IDENTIFIES IVAN C. DINSMORE, OLS (1554) IDENTIFIES DINSMORE AND ENGLAND LTD. (H&M) IDENTIFIES HEWITT AND MILNE
 Wit. DENOTES WITNESS
 PIN DENOTES PROPERTY IDENTIFICATION NUMBER
 Meas. DENOTES MEASURED
 P1 DENOTES PLAN 3R-3243

OBSERVED REFERENCE POINTS (ORPs) ARE DERIVED FROM GNSS OBSERVATIONS USING THE CAN-NET VRS NETWORK, UTM ZONE 17 (81° LONGITUDE) NAD83 CSRS (2010 EPOCH) COORDINATES TO URBAN ACCURACY PER SEC. 14 (2) OF O.REG 216/10		
UTM NAD83 CSRS CO-ORDINATE TABLE		
POINT ID	NORTHING	EASTING
ORP A	4920596.19	470573.88
ORP B	4920636.62	471075.45

COORDINATES CANNOT, IN THEMSELVES, BE USED TO RE-ESTABLISH CORNERS OR BOUNDARIES SHOWN ON THIS PLAN

O:\PROJECTS\PROJECTS_2024\246501\MSCAD\246501_RP(2).DWG PROJECT No. 246501
 DRAWN BY : BRAD PETROFF
 CHECKED BY : PETER RAIKES

MIDLAND: 705.526.7552 • 670 Balm Beach Road E, Unit 1, Midland, ON L4R 0J6
 BRACEBRIDGE: 705.645.1732 • 205 Manitoba Street, Unit 2 Bracebridge, ON P1L 1S3
 OWEN SOUND: 519.371.9420 • 870 2nd Ave W, Owen Sound, ON N4K 4M5

BARRIE: 705.722.6222 GREY/BRUCE: 519.534.1150
 MUSKOKA/PARRY SOUND: 705.640.7552 PORT ELGIN: 519.832.9008
 INFO@SURVEY4U.COM SURVEY4U.COM