

# **Public Information Centre**

## **Highway 21 Resurfacing Project Southampton**

**November 06, 2025  
4:30 P.M. to 5:30 P.M.**

# PROJECT INFORMATION

The Town of Saugeen Shores has retained R.J. Burnside & Associates Limited to provide engineering design services for the planned resurfacing of Highway 21 (Railway Street, Albert Street, and North Rankin Street) from South Street to Craig Street in Southampton.

## **The resurfacing project will:**

- Explore opportunities to improve parking in the downtown area.
- Review existing roadway and pavement marking strategies to enhance safety and travel options for all road users, including motorists and cyclists.
- Review condition and replacement options of existing road crossing culverts.
- Replacement of fire hydrant sets, water valves and boxes.
- Review native tree planting opportunities along the road corridor.
- Provide opportunities to widen paved shoulders and review areas suitable for bicycle lanes.

Please review the display materials. We encourage you to talk one-on-one with the project team members if you have any questions.

# PROPOSED IMPROVEMENTS

- Asphalt resurfacing along Railway Street/Albert Street/North Rankin Street (Highway 21) from South Street to Craig Street excluding Zgaa-biig-ni-gan Bridge and the Turner Street intersection to improve rideability.
- Provide 1.2m Paved Shoulders from South Street to Peel Street.
- Extend Bicycle Lanes from Division Street to Craig Street.
- Revise pavement markings to facilitate increased number of permanent and seasonal parking opportunities, left turn storage and safer road crossings.
- Replace 3 deteriorating CSP road crossing culverts between South Street and Peel Street.
- Replace deteriorating Water Boxes, Water Valves and Fire Hydrants.
- Install Decorative Banner Poles to enhance entrance to the Downtown.
- Provide opportunities to plant approximately 100 native trees along the rural ROW portions.

## MTO CONNECTING LINKS PROGRAM

- The Town of Saugeen Shores has been approved to receive funding of \$3,000,000.00 from the Ministry of Transportation through the 2025-2026 Connecting Links program with the anticipated construction start date of late March 2026.
- The total estimated cost of Construction is \$3.8 million which includes the asphalt resurfacing, culvert replacement, water infrastructure upgrades, tree plantings, pavement marking improvements and contingencies.

## PROPOSED PAVEMENT MARKING

New pavement markings will be provided to delineate continuous 3.5m wide traffic lanes throughout the entire road corridor while providing the following improvements / additions:

- Additional 12 permanent and 36 Seasonal parallel parking stalls.
- Improve the Lansdowne Street pedestrian crossing.
- Increase Left Turning Lane vehicle storage onto High Street from Hwy 21 northbound.
- Extend 1.8m wide Bicycle Lanes from Division Street to Craig Street with current bicycle lane standards.
- Single solid white line to delineate seasonal parking and traffic lanes along the roadway in the urban areas.

## Next Steps

	Project Task	Estimated Dates
1.	Review Feedback from Public Information Centre	November 14, 2025
2.	Submit 90% Detailed Design Plans	November 21, 2025
3.	Presentation to Council	November 24, 2025
4.	Finalize Tender Package including Design Drawings	January 30, 2026
5.	Advertise for Construction	February 02, 2026
6.	Anticipated Construction Start	March 30, 2026
7.	Anticipated Construction Completion	June 26, 2026

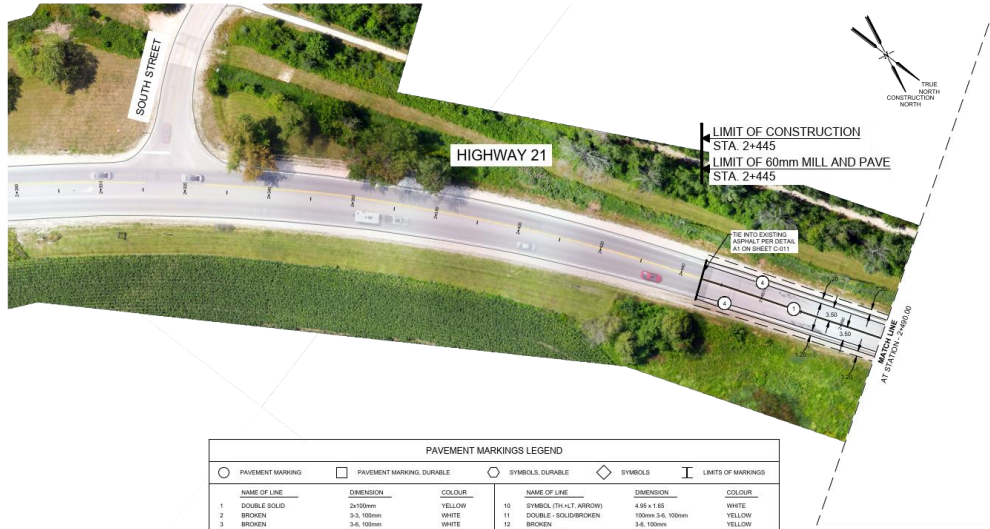
If you should have any questions regarding the project, please contact the following project team members:

### **R.J. Burnside & Associates Limited**

Maisy Jefferson  
Project Engineer  
Phone: 226-476-3114  
Email: [maisy.jefferson@rjburnside.com](mailto:maisy.jefferson@rjburnside.com)

### **Town of Saugeen Shores**

Lukas Heathers  
Development Engineering Supervisor  
Phone: 519-832-2008, ext. 143  
Email: [engineering@saugeenshores.ca](mailto:engineering@saugeenshores.ca)



### TREE PLANTING LEGEND

- SALT TOLERANT - LARGE CANOPY TREES TO INCLUDE:  
Cedar canadensis / Cornus heterophylla  
Fraxinus canadensis / American sycamore  
Liquidambar styraciflua / Flamingo cypripedium  
Quercus rubra / Red oak
- NEW TREES PLANTED AS PART OF HIGH STREET RESTORATION WORKS
- SALT TOLERANT - SMALL STYLISH DECIDUOUS TREES TO ACCOMMODATE OVERHEAD HYDRO LINES TO INCLUDE:  
Aster spicata / Queen's sycamore  
Cornus canadensis / Redbud  
Prunella serotina / Chipmunk  
Thuja occidentalis / Northern Sycamore

### PAVEMENT MARKINGS LEGEND

PAVEMENT MARKING	PAVEMENT MARKING, DURABLE	SYMBOLS, DURABLE	SYMBOLS	LIMITS OF MARKINGS
1 DOUBLE SOLID	2 BROWN	3 BROWN	4 SOLID	5 STOP (DURABLE)
6 SYMBOL (TH ARROW)	7 SYMBOL (LT ARROW)	8 SYMBOL (RT ARROW)	9 SYMBOL (TH-RT ARROW)	10 DOUBLE SOLID
11 DOUBLE - SOLID/BROKEN	12 BROKEN	13 CROSSBALK	14 SOLID	15 SYMBOL (DIAMOND)
16 SYMBOL (BI-CYCLE)	17 BROKEN	18 SOLID		



NOT FOR CONSTRUCTION

No.	Issue / Revision	Date	Auth.
1	ISSUED FOR R/S REVIEW	20/10/17	
2	ISSUED FOR P/C	20/10/17	

Issue No.	Issued	Revised	Checked	Drawn	Scale

**BURNSIDE**

TOWN OF SAUGEEN SHORES  
602 TRAILBLAZER DRIVE  
PORT ELGIN, ONTARIO  
NPH 2C0

**R.J. Burnside & Associates Limited**  
3 Floral Crescent  
Collingwood, Ontario, L9Y 4J6  
telephone: 709.263.6602  
www.rjburnside.com

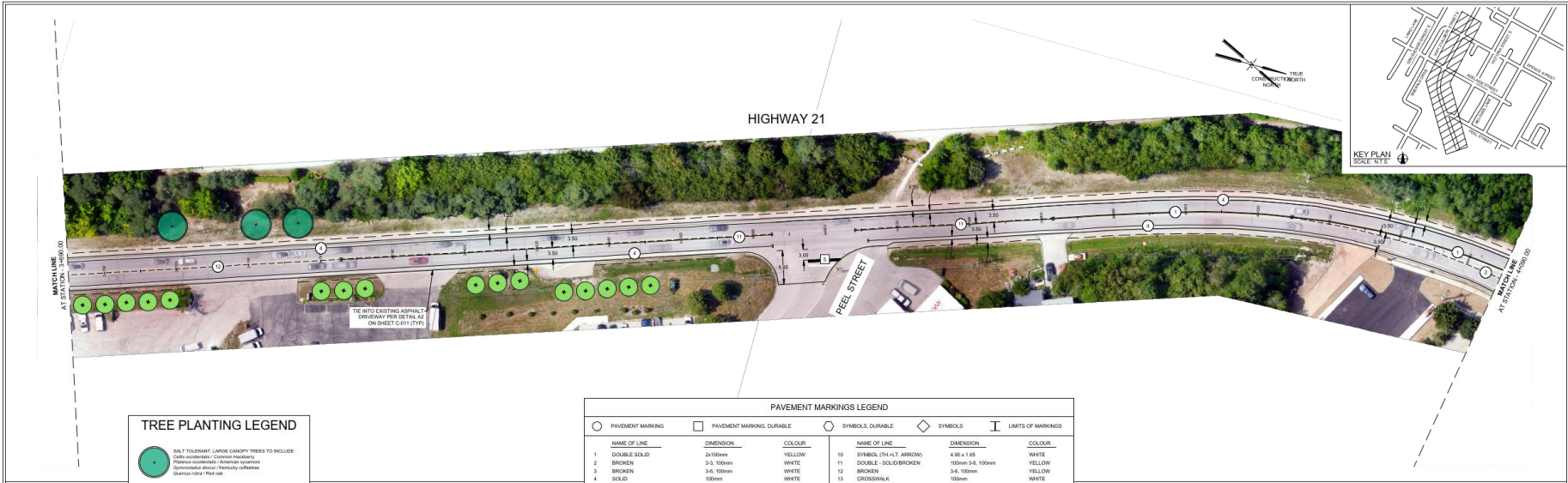
**Highway 21 Resurfacing**

**PLAN**  
**Highway 21**  
STA. 2+445 TO STA. 2+490

Sheet No. **C-001**

Scale: 1:500



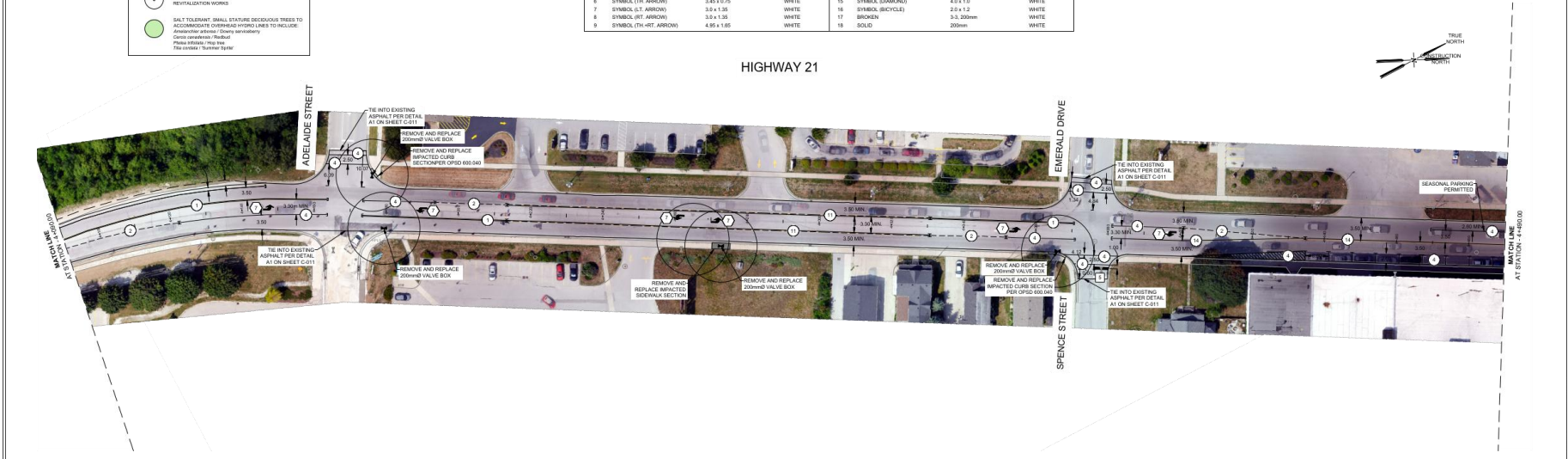


**TREE PLANTING LEGEND**

- SALT TOLERANT - LARGE CANOPY TREES TO INCLUDE:  
Cottonwood / Cottonwood Hybrid  
Pineau canadien / American sycamore  
Quercus rubra / Red oak
- NEW TREES PLANTED AS PART OF HIGH STREET RESTAURATION WORKS
- SALT TOLERANT - SMALL SPECIES DEEPWOOD TREES TO ACCOMMODATE OVERHEAD HYDRO LINES TO INCLUDE:  
Asterifolius albidus / Shiny leaved fern  
Cercis canadensis / Redbud  
Prunella pennsylvanica / Chickadee  
Pice canadensis / Spruce

**PAVEMENT MARKINGS LEGEND**

PAVEMENT MARKING	PAVEMENT MARKING, DURABLE	SYMBOLS, DURABLE	SYMBOLS	LIMITS OF MARKINGS
1 DOUBLE SOLID	2x100mm	YELLOW	10 SYMBOL (TH-RT, ARROW)	4.85 x 1.85
2 BROKEN	3-3 100mm	WHITE	11 DOUBLE - SOLID/BROKEN	100mm x 34, 100mm
3 BROWN	2-6 100mm	WHITE	12 BROKEN	3-6 100mm
4 SOLID	100mm	WHITE	13 CROSSWALK	100mm
5 STOP (DURABLE)	400mm	WHITE	14 SOLID	100mm
6 SYMBOL (TH, ARROW)	3.45 x 0.75	WHITE	15 SYMBOL (DIAMOND)	4.8 x 1.0
7 SYMBOL (LT, ARROW)	3.8 x 1.85	WHITE	16 SYMBOL (BICYCLE)	2.9 x 1.2
8 SYMBOL (RT, ARROW)	3.8 x 1.25	WHITE	17 BROKEN	3-3 200mm
9 SYMBOL (TH-RT, ARROW)	4.85 x 1.85	WHITE	18 SOLID	200mm



**NOT FOR CONSTRUCTION**

No.	Issue / Revision	Date	Auth.
1	ISSUED FOR R/S REVIEW	201017	
2	ISSUED FOR P/C	201021	

DATE	DESCRIPTION	BY	CHECKED

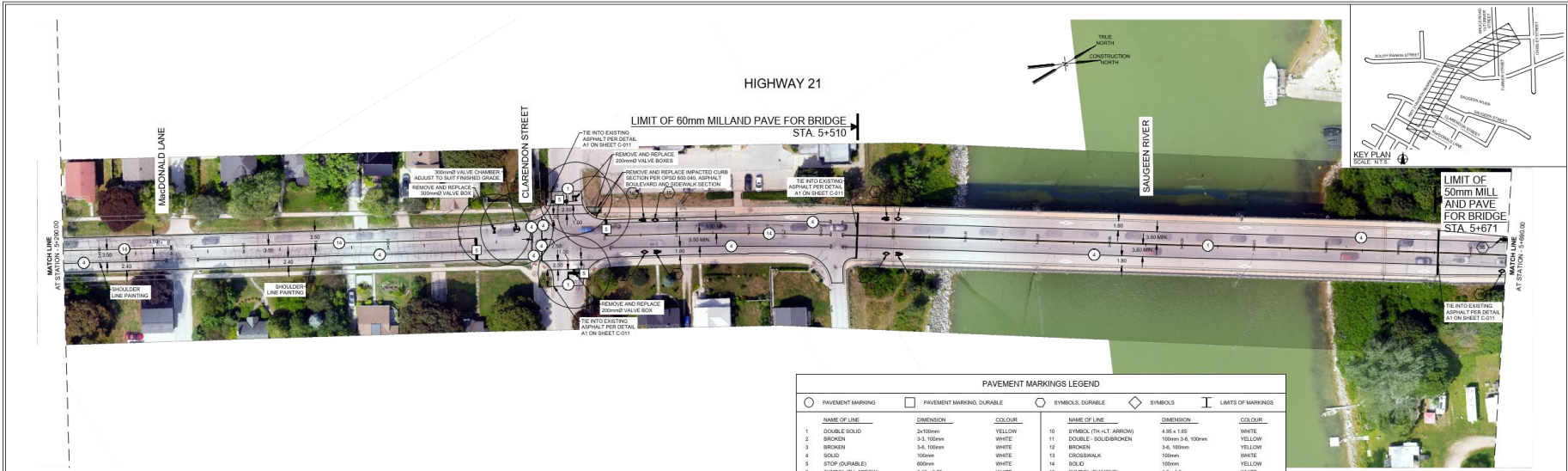
**BURNSIDE**  
TOWN OF SAUGEEN SHORES  
600 TRAILBLAZER DRIVE  
PORT ELGIN, ONTARIO  
NPH 2C0

**R. J. Burnside & Associates Limited**  
3 Street Centre  
Collingwood, Ontario, L9Y 4J6  
telephone: 709-205-6600  
www.rjburnside.com

**Highway 21 Resurfacing**  
PLAN  
**Highway 21**  
STA. 4+96.00 TO STA. 4+90.00

Sheet No. **C-003**





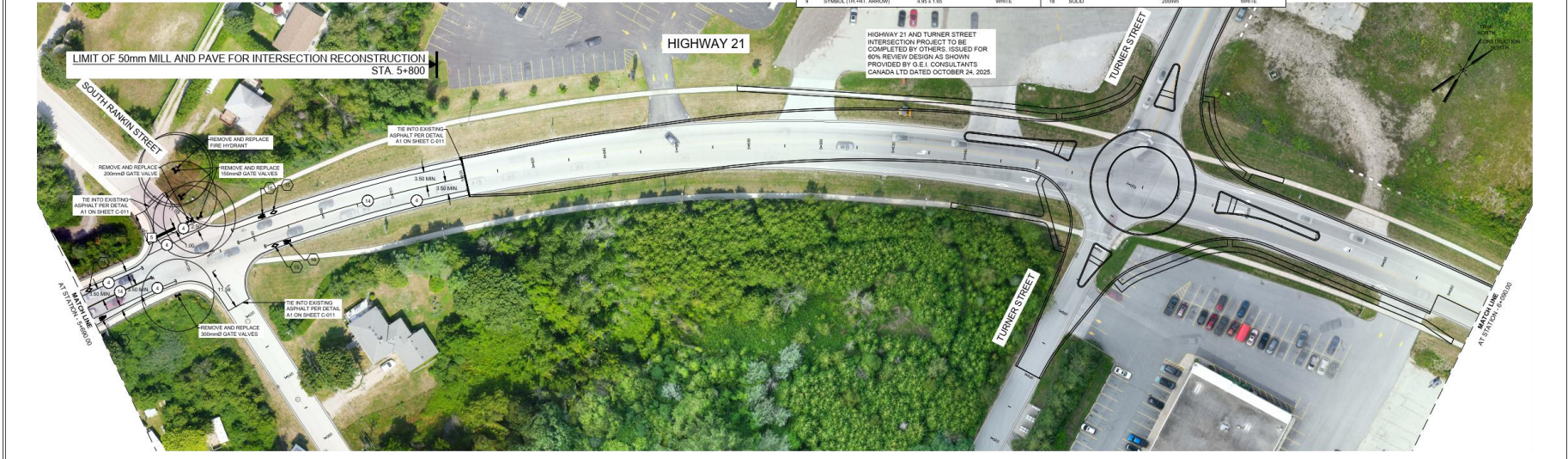
HIGHWAY 21

LIMIT OF 60mm MILL AND PAVE FOR BRIDGE STA. 5+510

LIMIT OF 50mm MILL AND PAVE FOR BRIDGE STA. 5+671

**PAVEMENT MARKINGS LEGEND**

PAVEMENT MARKING	PAVEMENT MARKING, DURABLE	SYMBOLS, DURABLE	SYMBOLS	LIMITS OF MARKINGS	
○		○	◇		
NAME OF LINE	DIMENSION	COLOR	NAME OF LINE	DIMENSION	COLOR
1 DOUBLE SOLID	200mm	YELLOW	10 SYMBOL (TRI-LET ARROW)	4.85 x 1.85	WHITE
2 BROKEN	3.4, 100mm	WHITE	12 BROKEN	3.6, 100mm	YELLOW
3 BROKEN	3.4, 100mm	WHITE	13 CROSSWALK	100mm	WHITE
4 SOLID	100mm	WHITE	14 SOLID	100mm	YELLOW
5 STOP (DURABLE)	600mm	WHITE	15 SYMBOL (DIAMOND)	4.5 x 1.3	WHITE
6 SYMBOL (CYC ARROW)	3.0 x 1.35	WHITE	16 SYMBOL (BICYCLE)	2.0 x 1.2	WHITE
7 SYMBOL (L.T. ARROW)	3.0 x 1.35	WHITE	17 BROKEN	3.3, 200mm	WHITE
8 SYMBOL (RT. ARROW)	4.85 x 1.85	WHITE	18 SOLID	200mm	WHITE
9					



HIGHWAY 21

LIMIT OF 50mm MILL AND PAVE FOR INTERSECTION RECONSTRUCTION STA. 5+800

HIGHWAY 21 AND TURNER STREET INTERSECTION PROJECT TO BE COMPLETED BY OTHERS. ISSUED FOR 60% REVIEW DESIGN AS SHOWN. PROVIDED BY G.E.I. CONSULTANTS CANADA LTD DATED OCTOBER 24, 2025

NOT FOR CONSTRUCTION

No.	Issue / Revision	Date	Auth.
1	ISSUED FOR 60% REVIEW	25/10/17	
2	ISSUED FOR P.C.	25/10/21	

Drawn By	Checked By	Scale	Sheet No.

**BURNSIDE**

TOWN OF SAUGEN SHORES  
602 TRAILBLAZER DRIVE  
PORT ELGIN, ONTARIO  
NPH-2C0

**R.J. Burnside & Associates Limited**  
11 Forest Crescent  
Collingwood, Ontario, L9Y 4J6  
telephone: 709.202.6600  
web: www.rjburnside.com

**Highway 21 Resurfacing**

**PLAN Highway 21**  
STA. 5+000 TO STA. 6+000

Drawn	Checked	Scale	Sheet No.

DATE: 25/10/21

PROJECT NO: 2025-025-0220-0870

SCALE: 1" = 10'



HIGHWAY 21



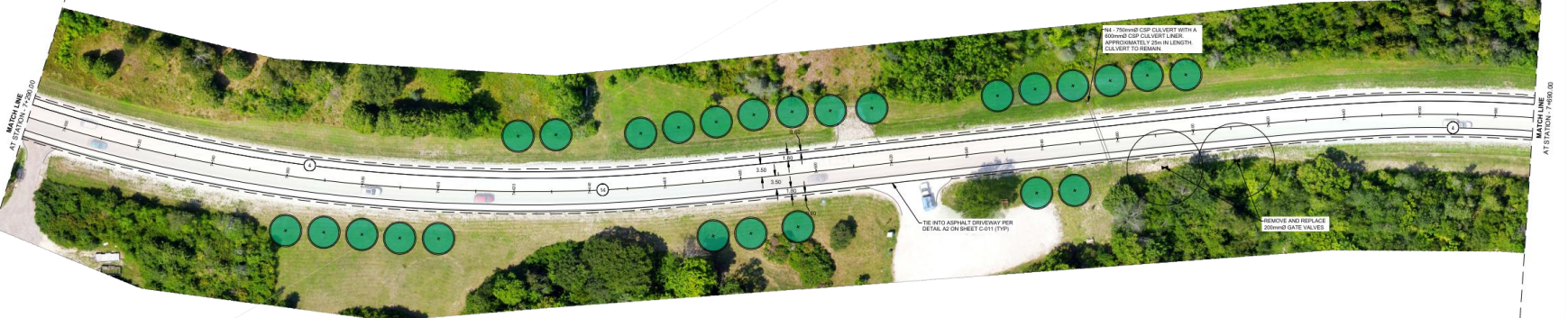
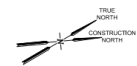
**TREE PLANTING LEGEND**

- SALT TOLERANT - LARGE CANOPY TREES TO INCLUDE:  
Cedar canadensis / Carya heterophylla  
Fraxinus canadensis / American sycamore  
Liquidambar styraciflua / Strawberry lilytree  
Quercus rubra / Red oak
- NEW TREES PLANTED AS PART OF HIGH STREET  
INDUSTRIAL/STREET TREES
- SALT TOLERANT - SMALL / MEDIUM DECIDUOUS TREES TO  
ACCOMMODATE OVERHEAD HYDRO LINES TO INCLUDE:  
Aster spicata / Aster / Queen's wherry  
Corylus canadensis / Redbud  
Prunella virginiana / Chickadee  
Picea canadensis / Blue pine  
Taxus canadensis / Northern Yellow Pine

**PAVEMENT MARKINGS LEGEND**

PAVEMENT MARKING	PAVEMENT MARKING DURABLE	SYMBOLS DURABLE	SYMBOLS	LIMITS OF MARKINGS	
NAME OF LINE	DIMENSION	COLOR	NAME OF LINE	DIMENSION	COLOR
1 DOUBLE SOLID	240mm	YELLOW	10 SYMBOL (TH-RT ARROW)	4.95 x 1.85	WHITE
2 BROKEN	3 x 100mm	WHITE	11 DOUBLE - SOLID/BROKEN	100mm x 34, 100mm	YELLOW
3 BROKEN	3 x 100mm	WHITE	12 BROKEN	3 x 100mm	YELLOW
4 SOLID	100mm	WHITE	13 CROSSWALK	100mm	WHITE
5 STOP (DURABLE)	600mm	WHITE	14 SOLID	100mm	YELLOW
6 SYMBOL (TH-ARROW)	3.45 x 0.75	WHITE	15 SYMBOL (DIAMOND)	4.0 x 1.0	WHITE
7 SYMBOL (LT-ARROW)	3.0 x 1.35	WHITE	16 SYMBOL (BICYCLE)	2.0 x 1.2	WHITE
8 SYMBOL (BT-ARROW)	3.0 x 1.55	WHITE	17 BROKEN	3 x 200mm	WHITE
9 SYMBOL (TH-RT-ARROW)	4.95 x 1.85	WHITE	18 SOLID	200mm	WHITE

HIGHWAY 21



NOT FOR CONSTRUCTION

No.	Issue / Revision	Date	Auth.
1	ISSUED FOR ROL REVIEW	25/10/17	
2	ISSUED FOR IFC	26/10/17	

**BURNSIDE**

TOWN OF SAUGEN SHORES  
602 TRAILBLAZER DRIVE  
PORT ELGIN, ONTARIO  
NPH-2C0

**R.J. Burnside & Associates Limited**  
31 River Court  
Collingwood, Ontario, L9Y 4J6  
telephone: 709-265-6600  
www.rjburnside.com

Sheet No: **HIGHWAY 21 RESURFACING**

**PLAN**  
**HIGHWAY 21**  
STA. 4+800 TO STA. 7+490

Client: **TOWN OF SAUGEN SHORES**

Project: **PORT ELGIN, ONTARIO**

Scale: 1:500

Drawn: [ ]  
Checked: [ ]  
In Charge: [ ]  
Date: [ ]

C-007



