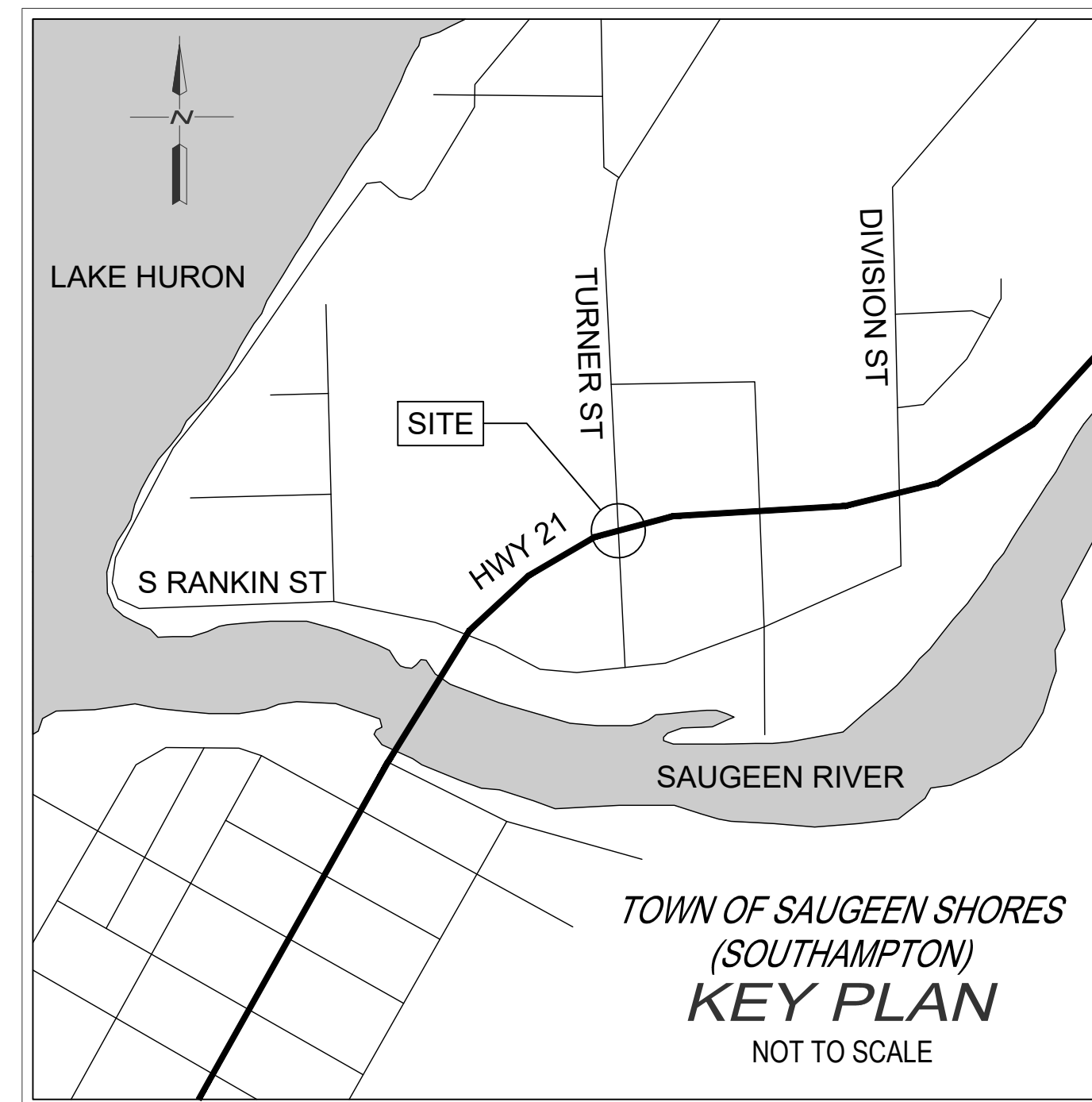


# HIGHWAY 21 AND TURNER STREET INTERSECTION IMPROVMENTS TOWN OF SOUTHAMPTON TOWNSHIP OF SAUGEEN SHORES CONTRACT 2503507



TOWNSHIP OF SAUGEEN SHORES  
SOUTHAMPTON, ON



## INDEX

Dwg. No.	Description
1	NOTES & DETAILS
2	EXISTING CONDITIONS & REMOVALS PLAN 1
3	EXISTING CONDITIONS & REMOVALS PLAN 2
4	EXISTING CONDITIONS & REMOVALS PLAN 3
5	HIGHWAY 21 PLAN & PROFILE 1 STA. 1+060 TO STA. 1+210
6	HIGHWAY 21 PLAN & PROFILE 2 STA. 1+210 TO STA. 1+330
7	HIGHWAY 21 PLAN & PROFILE 3 STA. 1+330 TO STA. 1+460
8	TURNER STREET PLAN & PROFILE 1 STA 3+010 TO STA 3+170
9	GRADING PLAN 1
10	GRADING PLAN 2
11	GRADING PLAN 3
12	PAVEMENT MARKINGS & SIGNAGE PLAN 1
13	PAVEMENT MARKINGS & SIGNAGE PLAN 2
14	PAVEMENT MARKINGS & SIGNAGE PLAN 3

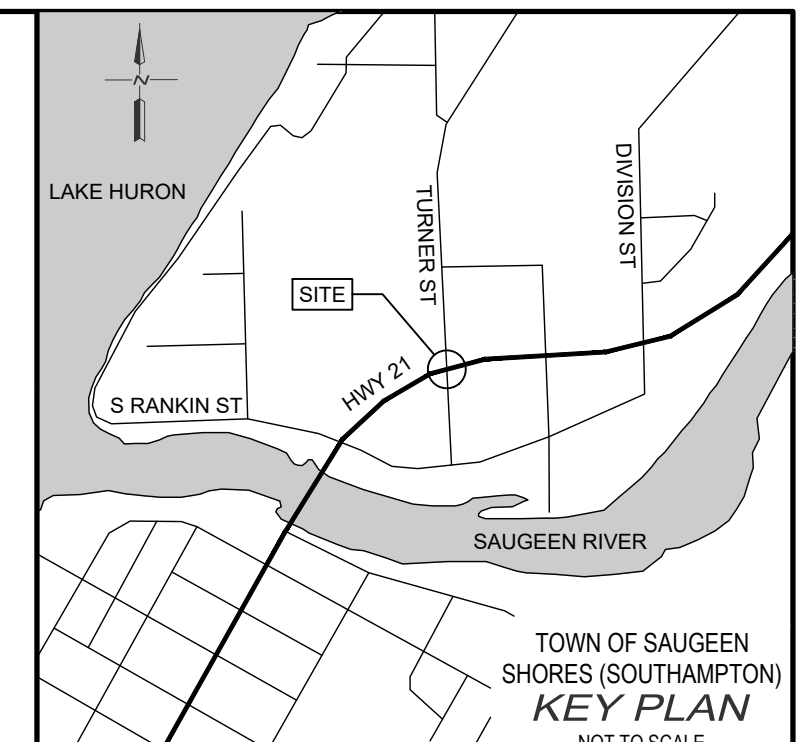
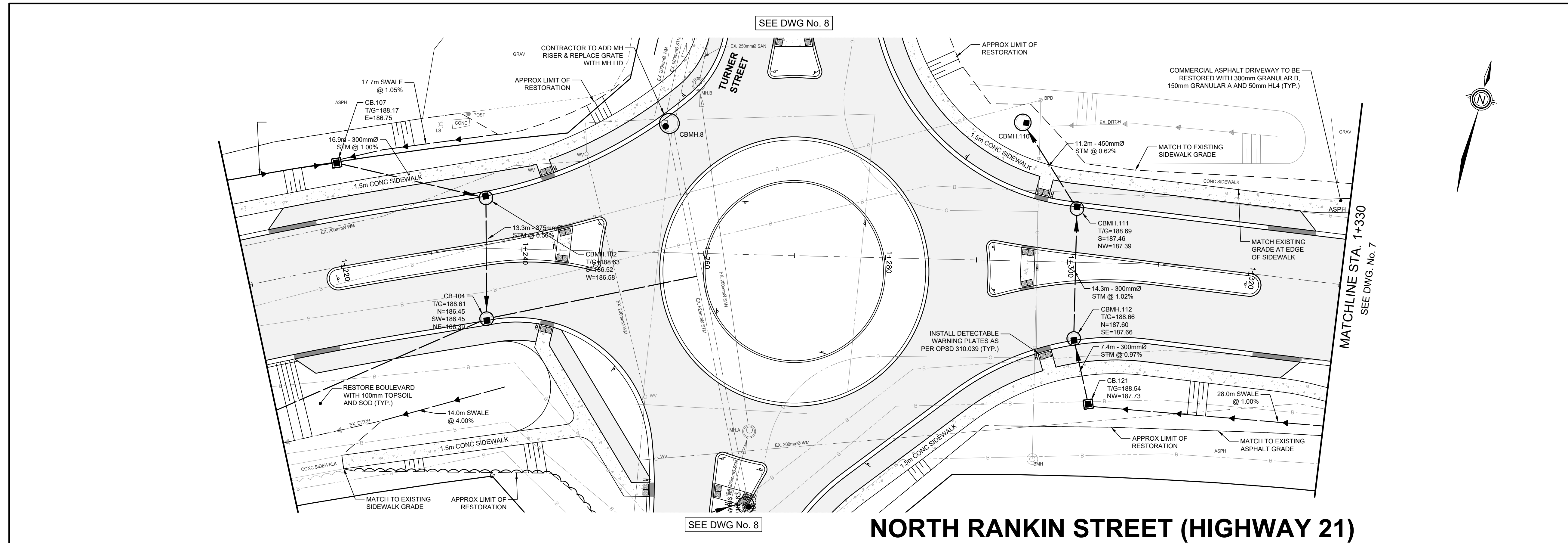






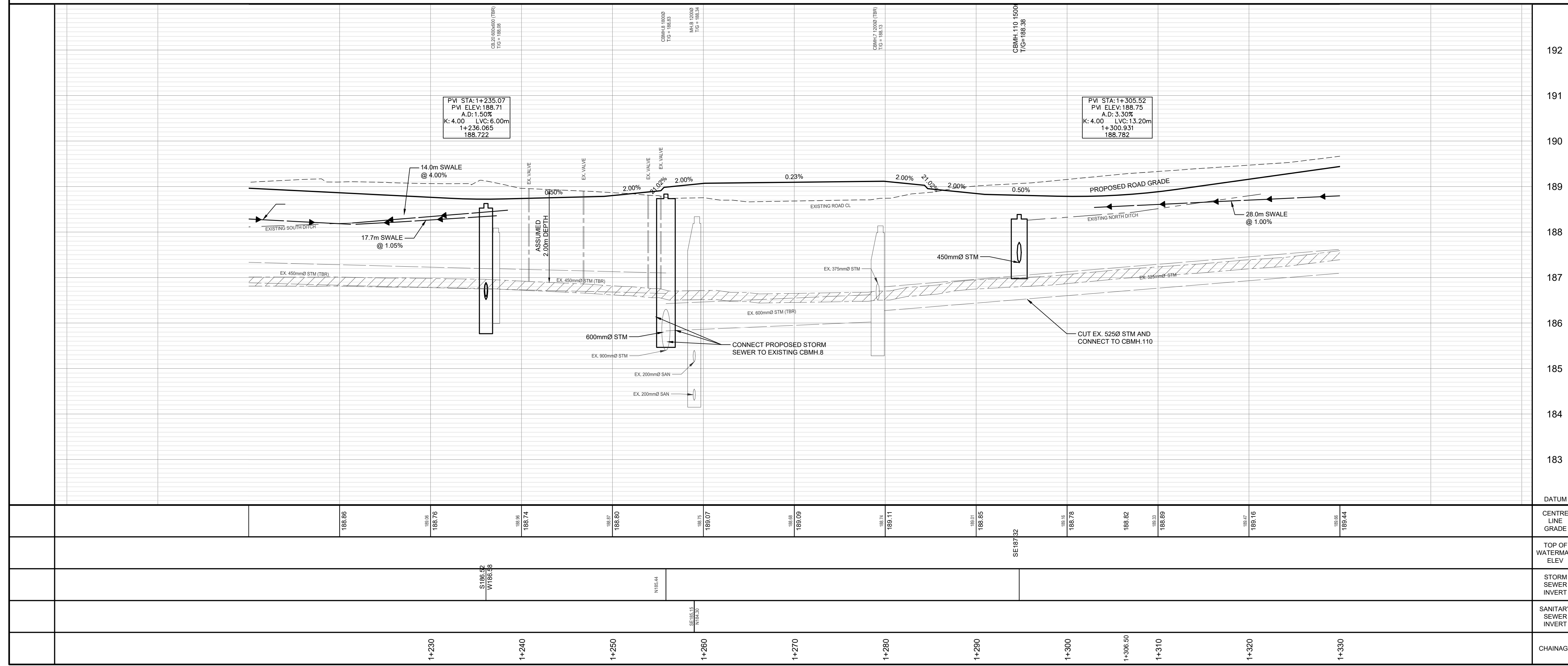






- NOTES:
- TOPOGRAPHIC SURVEY COMPLETED BY GEI CONSULTANTS CANADA LTD. DATED JULY 16, 2025.
  - THIS IS NOT A LEGAL PLAN. LEGAL BOUNDARY INFORMATION PROVIDED BY GREG RODGER (CLS) DATED AUGUST 21, 2025.
  - EXACT LOCATIONS OF PROPOSED AND EXISTING SERVICES TO BE VERIFIED IN FIELD.
- LEGEND:
- BENCHMARK
  - LOT LINE
  - R.O.W. LIMITS
  - DROP CURB
  - COMMERCIAL ASPHALT RESTORATION
  - CONCRETE RESTORATION
  - EX. SANITARY SEWER
  - EX. WATERMAIN
  - EX. STORM SEWER
  - PROP. STORM SEWER

**NORTH RANKIN STREET (HIGHWAY 21)**



BENCH MARKS:

- B.M. 2503507-1. ELEV. = 189.442m  
TOP NUT OF FIRE HYDRANT LOCATED ON THE NORTH EAST SIDE OF HIGHWAY 21 APPROXIMATELY 15m SOUTH WEST OF THE TURNER STREET AND NORTH RANKIN STREET INTERSECTION
- B.M. 2503507-2. ELEV. = 189.790m  
TOP NUT OF FIRE HYDRANT LOCATED ON THE SOUTH SIDE OF HIGHWAY 21 APPROXIMATELY 17m EAST OF THE TURNER STREET AND NORTH RANKIN STREET INTERSECTION

THE POSITION OF POLE LINES, CONDUITS, WATERMANS, SEWERS AND OTHER UNDERGROUND AND OVERGROUND UTILITIES AND STRUCTURES IS NOT NECESSARILY SHOWN ON THE CONTRACT DRAWINGS, AND, WHERE SHOWN, THE ACCURACY OF THE POSITION OF SUCH UTILITIES AND STRUCTURES IS NOT GUARANTEED.

BEFORE STARTING WORK, THE CONTRACTOR SHALL INFORM HIMSELF OF THE EXACT LOCATION OF ALL SUCH UTILITIES AND STRUCTURES, AND SHALL ASSUME ALL LIABILITY FOR ANY DAMAGE TO THEM.

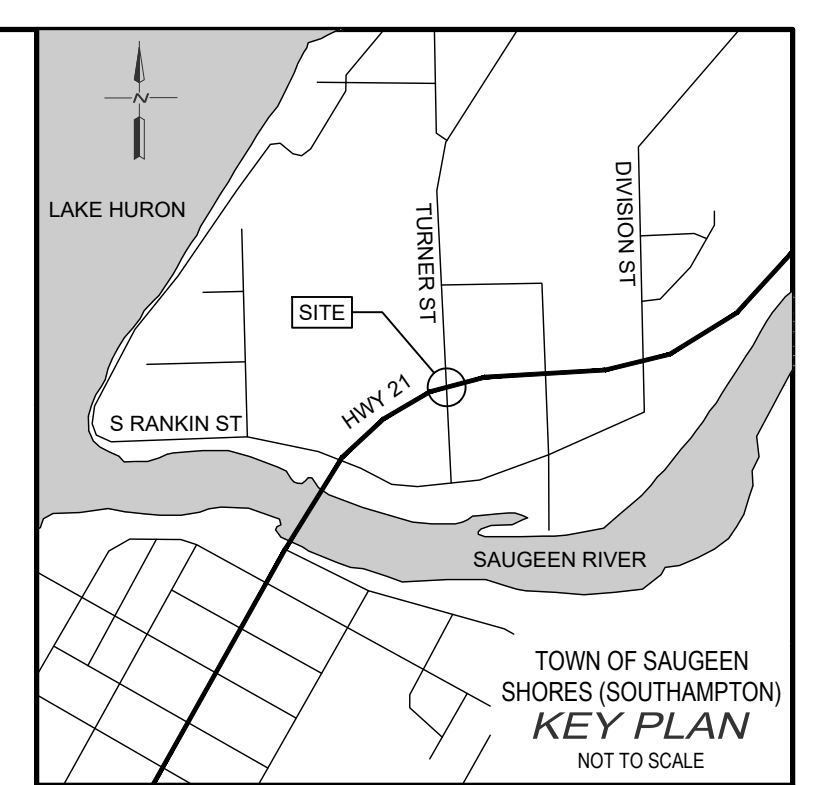
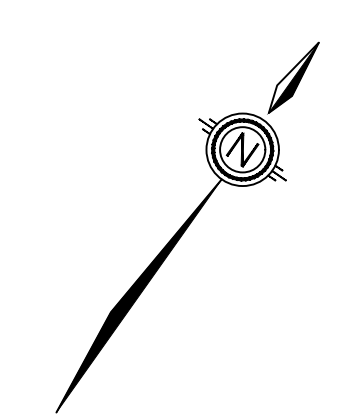
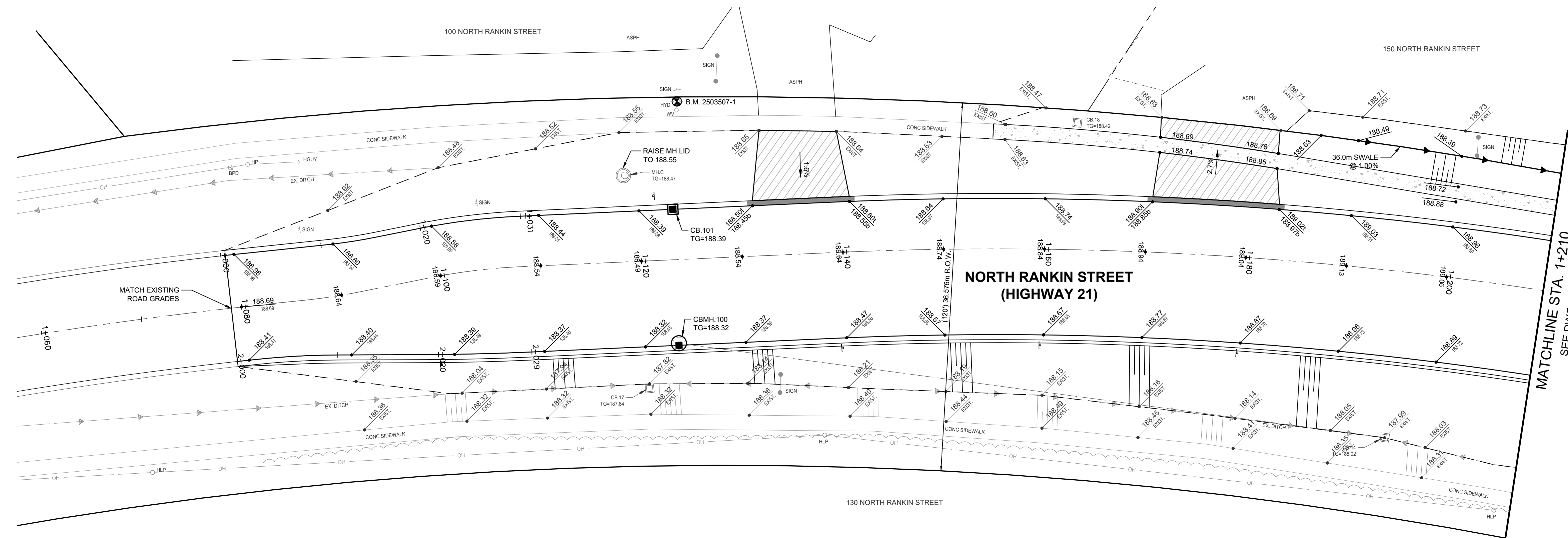
NO.	DATE	REVISION DESCRIPTION	CHKD
2	11/10/2025	75% DESIGN	BJF
1	10/24/2025	ISSUED FOR 60% REVIEW	BJF
0	07/22/2025	PRELIMINARY	

DATUM	HWY 21 AND TURNER INTERSECTION																
CENTRE LINE GRADE	TOWN OF SAUGEEN SHORES																
TOP OF WATERMAIN ELEV	TOWN OF SAUGEEN SHORES (SOUTHAMPTON)																
STORM SEWER INVERT	HIGHWAY 21 PLAN & PROFILE 2																
SANITARY SEWER INVERT	STA. 1+210 TO STA. 1+330																
CHAINAGE	<table border="1"> <tr> <td>DRAWN BY:</td> <td>APPROVED BY:</td> <td>PROJECT NO.:</td> <td>DRAWING NO.:</td> </tr> <tr> <td>CP</td> <td>BF</td> <td>2503507</td> <td>6</td> </tr> <tr> <td>DESIGNED BY:</td> <td>DATE:</td> <td>SCALE:</td> <td></td> </tr> <tr> <td>CP</td> <td>JULY 2025</td> <td>H=1:250 V=1:50</td> <td></td> </tr> </table>	DRAWN BY:	APPROVED BY:	PROJECT NO.:	DRAWING NO.:	CP	BF	2503507	6	DESIGNED BY:	DATE:	SCALE:		CP	JULY 2025	H=1:250 V=1:50	
DRAWN BY:	APPROVED BY:	PROJECT NO.:	DRAWING NO.:														
CP	BF	2503507	6														
DESIGNED BY:	DATE:	SCALE:															
CP	JULY 2025	H=1:250 V=1:50															





P:\Projects\2503507 - Hwy 21 Interchange Improvements\Drawings\Grading\Plan 1.dwg, L:\VCS\2503507\Drawings\Plan 1.dwg  
 FILED: 11/10/2025 11:02:05 AM BY: JCP/CP/BJF  
 LAST SAVED BY: JCP/CP/BJF  
 DATE: 11/10/2025 11:02:05 AM



- NOTES:**
- TOPOGRAPHIC SURVEY COMPLETED BY GEI CONSULTANTS CANADA LTD. DATED JULY 16, 2025.
  - THIS IS NOT A LEGAL PLAN. LEGAL BOUNDARY INFORMATION PROVIDED BY GREG RODGER (OLS) DATED AUGUST 21, 2025.
  - EXACT LOCATIONS OF PROPOSED AND EXISTING SERVICES TO BE VERIFIED IN FIELD.

- LEGEND:**
- BENCHMARK
  - LOT LINE
  - R.O.W. LIMITS
  - DROP CURB
  - COMMERCIAL ASPHALT RESTORATION
  - CONCRETE RESTORATION

**BENCH MARKS:**

B.M. 2503507-1, E.L.V. = 189.442m  
 TOP NUT OF FIRE HYDRANT LOCATED ON THE NORTH EAST SIDE OF HIGHWAY 21 APPROXIMATELY 150m SOUTH WEST OF THE TURNER STREET AND NORTH RANKIN STREET INTERSECTION

B.M. 2503507-2, E.L.V. = 189.790m  
 TOP NUT OF FIRE HYDRANT LOCATED ON THE SOUTH SIDE OF HIGHWAY 21 APPROXIMATELY 75m EAST OF THE TURNER STREET AND NORTH RANKIN STREET INTERSECTION

THE POSITION OF POLE LINES, CONDUITS, WATERMANS, SEWERS AND OTHER UNDERGROUND AND OVERGROUND UTILITIES AND STRUCTURES IS NOT NECESSARILY SHOWN ON THE CONTRACT DRAWINGS, AND, WHERE SHOWN, THE ACCURACY OF THE POSITION OF SUCH UTILITIES AND STRUCTURES IS NOT GUARANTEED.

BEFORE STARTING WORK, THE CONTRACTOR SHALL INFORM HIMSELF OF THE EXACT LOCATION OF ALL SUCH UTILITIES AND STRUCTURES, AND SHALL ASSUME ALL LIABILITY FOR ANY DAMAGE TO THEM.

2	11/10/2025	75% DESIGN	BJF
1	10/24/2025	ISSUED FOR 60% REVIEW	BJF
0	07/22/2025	PRELIMINARY	-
NO.	MMDDYY	REVISION DESCRIPTION	CHKD

**GEI Consultants Canada**  
 GEI CONSULTANTS CANADA LTD.  
 975 WALLACE AVENUE NORTH  
 LISTOWEL, ONTARIO N4W 1M6  
 519.291.9339

HWY 21 AND TURNER INTERSECTION			
TOWN OF SAUGEEN SHORES			
TOWN OF SAUGEEN SHORES (SOUTHAMPTON)			
GRADING PLAN 1			
DRAWN BY:	APPROVED BY:	PROJECT NO.:	DRAWING NO.:
CP	BF	2503507	9
DESIGNED BY:	DATE:	SCALE:	
CP	JULY 2025	1:250	

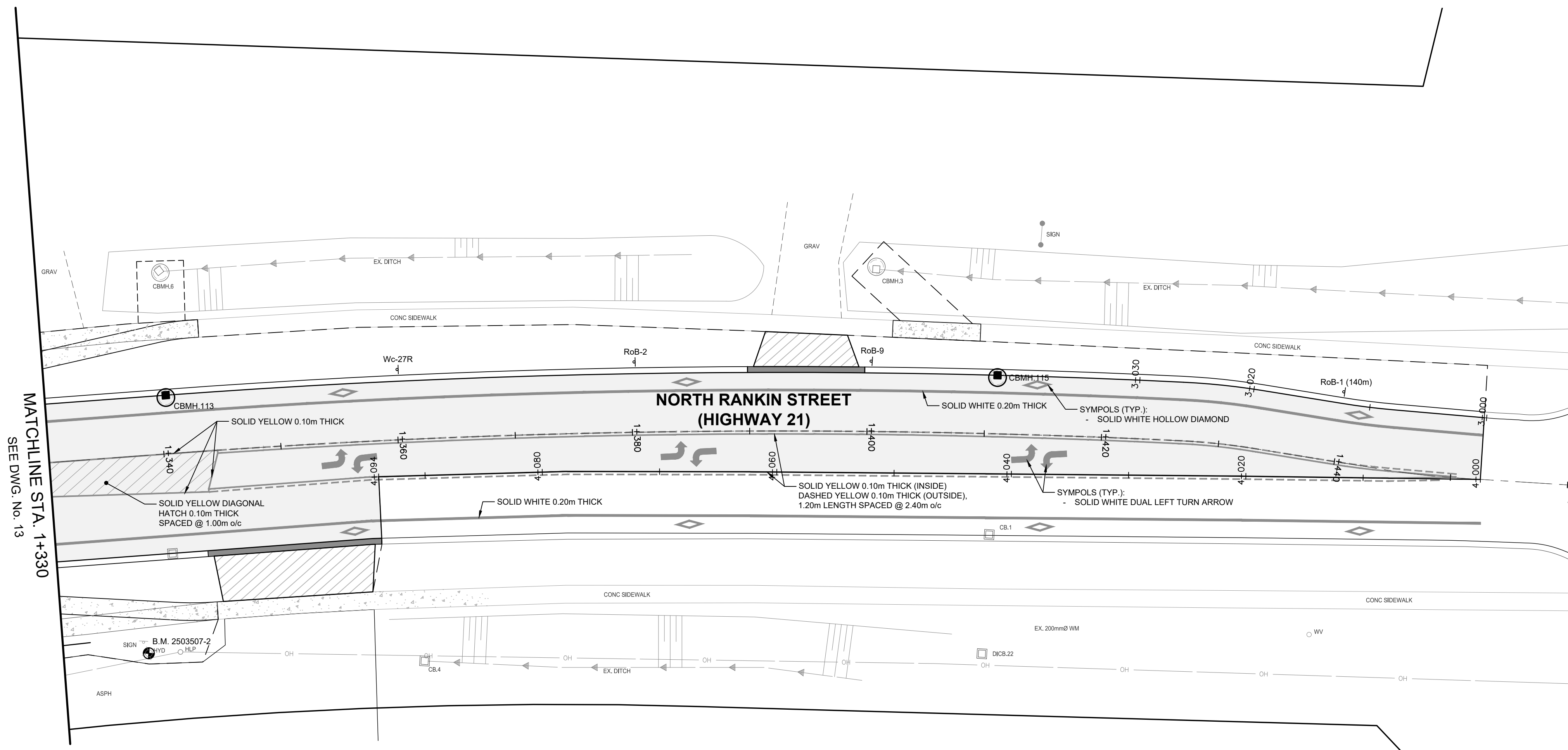




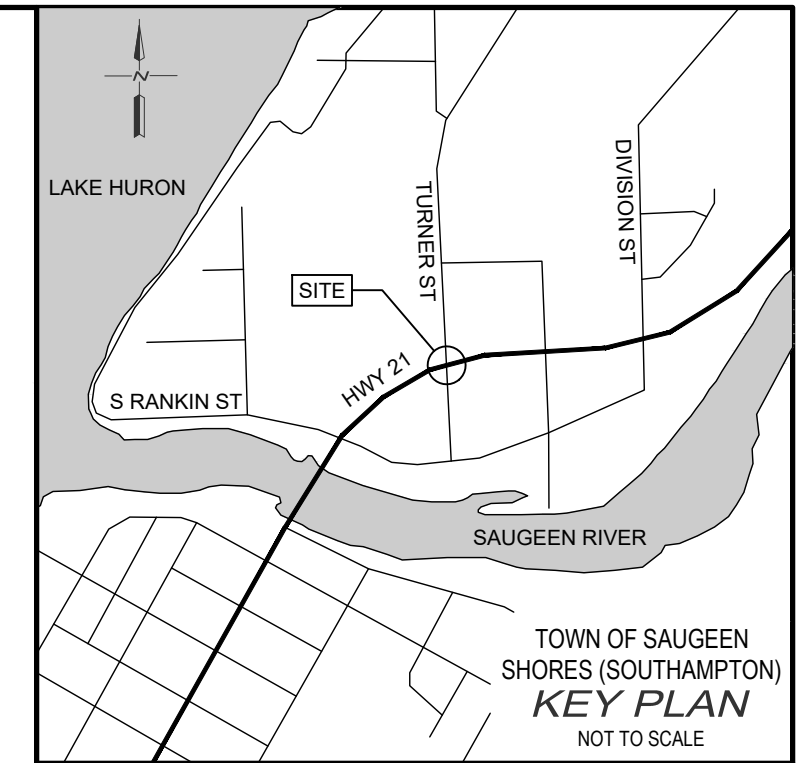
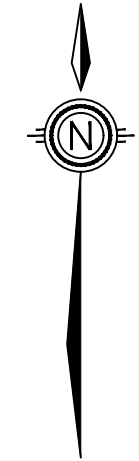
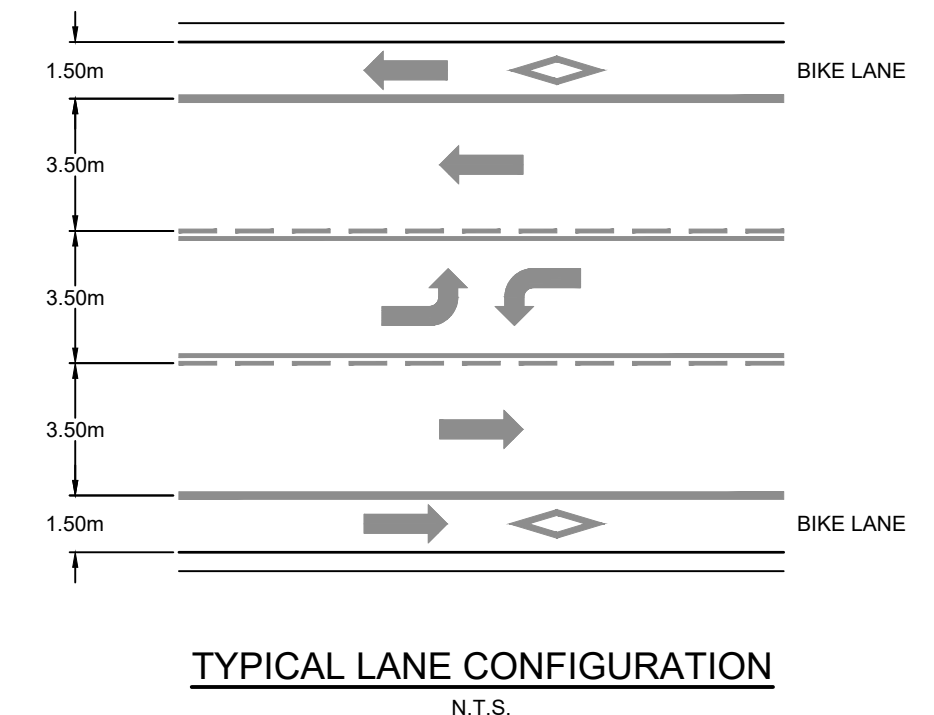




P:\Projects\2025\2503507 - Hwy 21 Intersections\Improvements\Drawings\2503507 - Pavement Markings & Signage Plans 3  
 FILED: 2025/07/23 10:28:33 AM PLOTTED BY: P:\Users\CP\Documents\2503507 - Hwy 21 Intersections\Improvements\Drawings\2503507 - Pavement Markings & Signage Plans 3  
 LAST SAVED BY: CP



MATCHLINE STA. 1+330  
 SEE DWG. No. 13



- NOTES:
- TOPOGRAPHIC SURVEY COMPLETED BY GEI CONSULTANTS CANADA LTD. DATED JULY 16, 2025.
  - THIS IS NOT A LEGAL PLAN. LEGAL BOUNDARY INFORMATION PROVIDED BY GREG RODGER (OLS) DATED AUGUST 21, 2025.
  - EXACT LOCATIONS OF PROPOSED AND EXISTING SERVICES TO BE VERIFIED IN FIELD.

- LEGEND:
- BENCHMARK
  - LOT LINE
  - R.O.W. LIMITS
  - DROP CURB
  - COMMERCIAL ASPHALT RESTORATION
  - CONCRETE RESTORATION

- BENCH MARKS :
- B.M. 2503507-1, E.L.V. = 189.442m  
TOP NUT OF FIRE HYDRANT LOCATED ON THE NORTH EAST SIDE OF HIGHWAY 21 APPROXIMATELY 150m SOUTH WEST OF THE TURNER STREET AND NORTH RANKIN STREET INTERSECTION
  - B.M. 2503507-2, E.L.V. = 189.790m  
TOP NUT OF FIRE HYDRANT LOCATED ON THE SOUTH SIDE OF HIGHWAY 21 APPROXIMATELY 170m EAST OF THE TURNER STREET AND NORTH RANKIN STREET INTERSECTION

THE POSITION OF POLE LINES, CONDUITS, WATERMANS, SEWERS AND OTHER UNDERGROUND AND OVERGROUND UTILITIES AND STRUCTURES IS NOT NECESSARILY SHOWN ON THE CONTRACT DRAWINGS, AND, WHERE SHOWN, THE ACCURACY OF THE POSITION OF SUCH UTILITIES AND STRUCTURES IS NOT GUARANTEED.

BEFORE STARTING WORK, THE CONTRACTOR SHALL INFORM HIMSELF OF THE EXACT LOCATION OF ALL SUCH UTILITIES AND STRUCTURES, AND SHALL ASSUME ALL LIABILITY FOR ANY DAMAGE TO THEM.

2	11/10/2025	75% DESIGN	BJF
1	10/24/2025	ISSUED FOR 60% REVIEW	BJF
0	07/22/2025	PRELIMINARY	-
NO.	MMDDYY	REVISION DESCRIPTION	CHKD

**GEI Consultants**  
 Canada  
 GEI CONSULTANTS CANADA LTD.  
 975 WALLACE AVENUE NORTH  
 LISTOWEL, ONTARIO N4W 1M6  
 519.291.9339

HWY 21 AND TURNER INTERSECTION

TOWN OF SAUGEEN SHORES

TOWN OF SAUGEEN SHORES (SOUTHAMPTON)

PAVEMENT MARKINGS & SIGNAGE PLAN 3

DRAWN BY : CP	APPROVED BY : BF	PROJECT NO. : 2503507	DRAWING NO. : 14
DESIGNED BY : CP	DATE : JULY 2025	SCALE : 1:250	