

# Staff Report

Presented By: Alex Thompson, Strategic Initiatives Officer  
Meeting Date: November 10, 2025  
Subject: Bruce C Project Update  
Attachment(s): Project Charter: Integrated Impact Assessment of the Proposed Bruce C Nuclear Project

---

## **Recommendation**

That Council receive the Bruce C Project Update report for information.

---

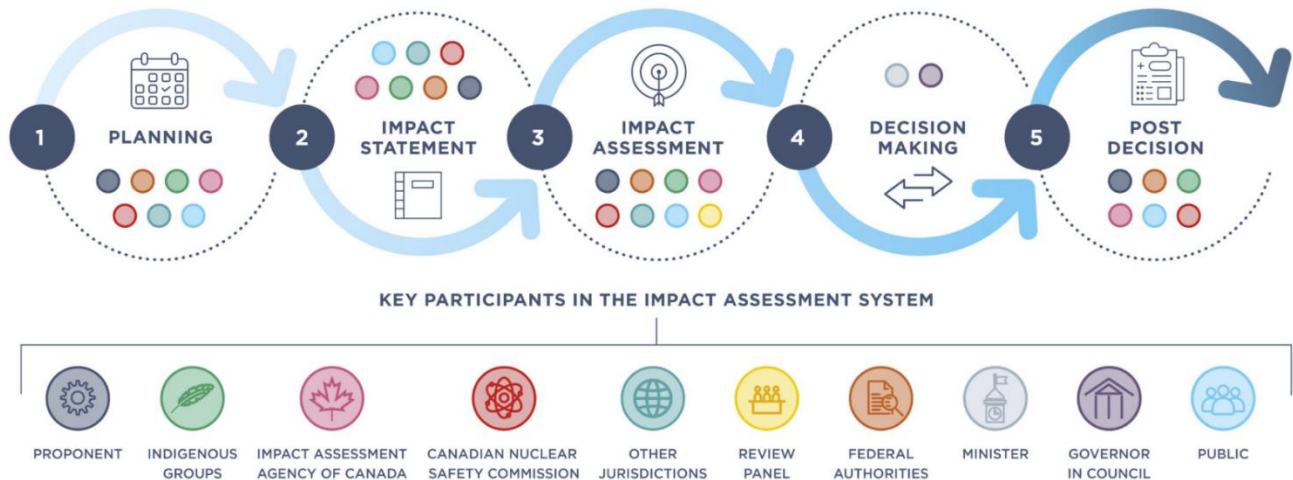
## **Report Summary**

The purpose of this report is to provide Council with an update on the Impact Assessment (IA) process for the Bruce C Nuclear project, including next steps.

## **Background/Analysis**

On August 19, the Impact Assessment Agency of Canada (IAAC), in collaboration with the Canadian Nuclear Safety Commission (CNSC), issued the formal Notice of Commencement of Impact Assessment under the Impact Assessment Act, concluding the Planning Phase. That notice initiated the next stage of the process, the development of the Impact Statement, and was accompanied by the [Integrated Tailored Impact Statement Guidelines](#) (TISG) and documents that shape the scope and depth of the assessment moving forward.

In the Impact Statement phase, Bruce Power will leverage the requirements identified in the TISG and conduct the assessment to evaluate the potential environmental, health, social, and economic effects of the Bruce C Project, as well as impact to Indigenous rights.



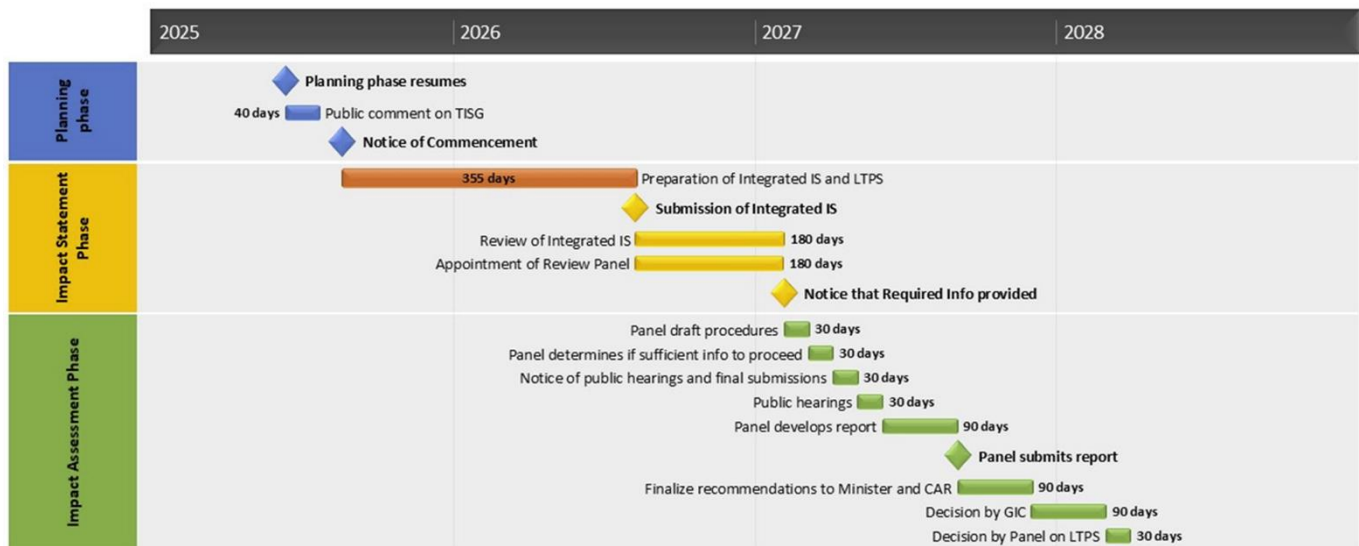
**In the Impact Statement phase, the Bruce C Project team will prepare the Impact Statement:**

1. Document existing conditions.
2. Include Indigenous knowledge and community knowledge where provided.
3. Assess potential positive and negative effects of the Project.
4. Identify ways to mitigate possible negative effects and enhance the beneficial effects of the proposed Project.
5. Understand cumulative impacts through Cumulative Effects Assessment.
6. Continue to engage with Indigenous Nations and Communities, municipalities and the public.

**Project Charter**

On September 3, IAAC, in collaboration with CNSC and Bruce Power, released the [Project Charter: Integrated Impact Assessment of the Proposed Bruce C Nuclear Project](#). This document outlines the key milestones and service standards for the Bruce C Nuclear Project’s integrated assessment process that each party commits to aiming to achieve to address Bruce Power’s request for greater certainty in the timelines for the process. The project charter is not a legally binding agreement and does not impose any legal requirements on the signatories. Key milestones of the project charter include:

- Impact Statement (IS) Submission by Bruce Power – August 2026
- Review and Comment Period of IS – August 2026 to February 2027
- Impact Assessment Public Hearings – April to May 2027
- Post-decision-making phase (licensing decision) – March 2028 to April 2028



## Bruce C Project Study Work

The Impact Assessment process is designed to look at the positive and negative environmental, economic, social and health impacts of a project. Below are three studies of high relevance to the Town that are being conducted and that will feed into the final Impact Statement. The results of these studies will be shared with Council once completed.

*Economic Impact Analysis* - The Economic Impact Analysis project is being undertaken to better understand the potential economic impacts of the Bruce C project. The project is being led by the Nuclear Innovation Institute (NII) in partnership with the Ontario Chamber of Commerce (OCC) to provide an independent overview of key economic impact data at the national, provincial, and local levels. Specific data points will include Gross Domestic Product (GDP) impacts, job creation figures, tax revenues for each level of government, etc.

*Workforce Assessment* - Led by Electricity Human Resources Canada (EHRC), the Workforce Assessment project will review workforce needs, assess key local workforce development infrastructure constraints, and identify best practices for engaging under-represented groups in the region. The assessment includes analysis conducted by EHRC as well as information received through Key Informant Interviews with local organizations/individuals with unique knowledge of the regional workforce.

*Socio-Economic Existing Conditions Report* - The Socio-Economic Existing Conditions Report is being developed to outline existing regional socioeconomic conditions (ex. health, demographics, infrastructure, etc.). These baseline conditions will then be used to set out the positive and potentially adverse socioeconomic effects of the Bruce C project. The report will be drafted based on requirements outlined in the Integrated Tailored Impact Statement Guidelines for the Bruce C project.

## **Linkages**

- Strategic Plan Alignment: Pillar 1: Meeting the Needs of a Growing Community
- Business Plan Alignment: CAO Major Initiative

## **Financial Impacts/Source of Funding**

No costs or revenue is associated with this report.

---

Prepared By: Alex Thompson, Strategic Initiatives Officer

Reviewed By: Jill Roote, Manager, Strategic Initiatives

Approved By: Kara Van Myall, Chief Administrative Officer