

HIGH STREET RECONSTRUCTION

PRESENTATION OF FINAL DESIGN OF COMMEMORATIVE WALL



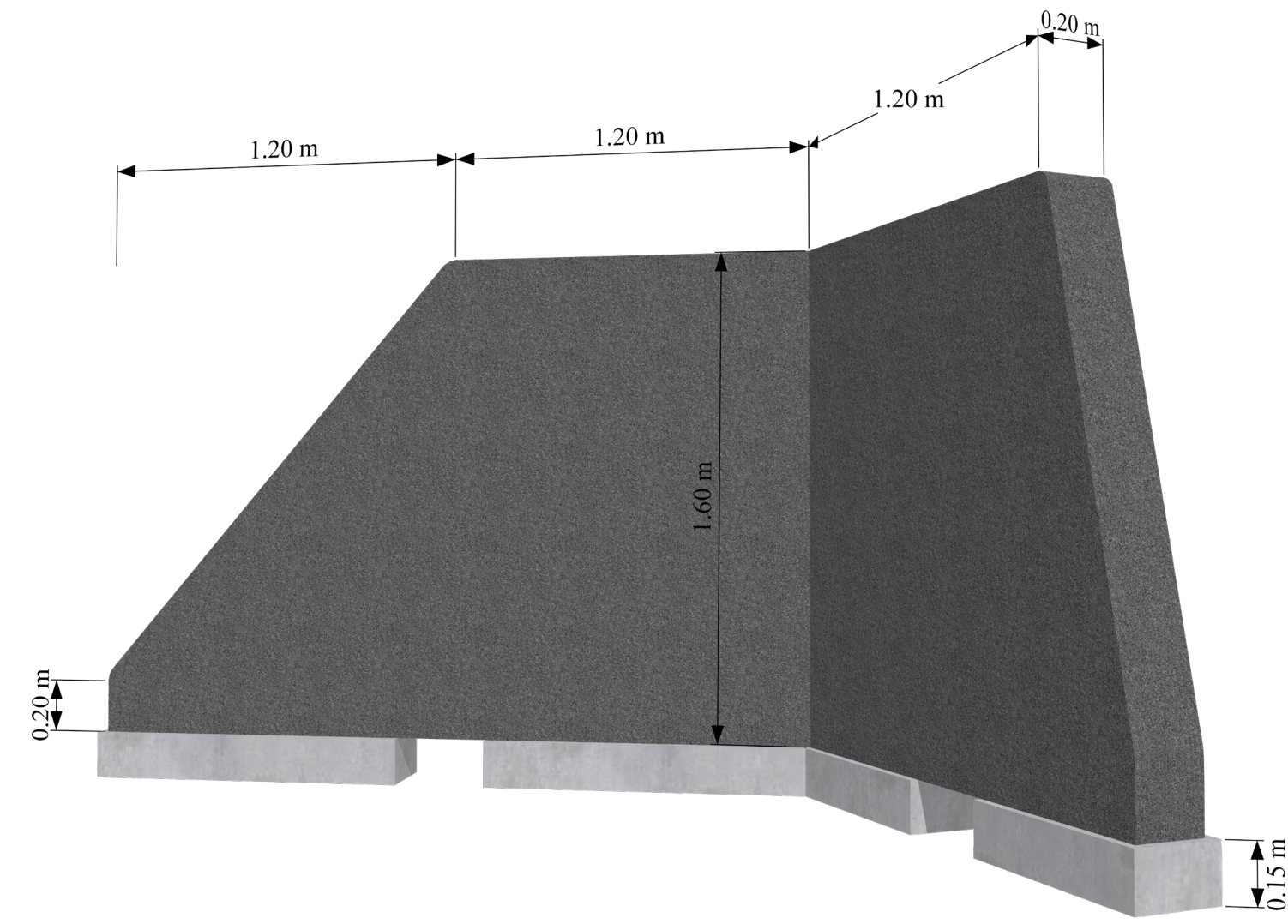
COUNCIL STAFF REPORT: AUGUST 11, 2025

- Conceptual designs were put together based on discussions with the Town and the minutes which RJ Burnside received from the Cenotaph ad hoc Committee meetings that occurred in March 2025.
- The scope included proposing two commemorative walls, one in the south-west curb extension and one in the north-west curb extension at the intersection of High Street and Huron St, representing/honouring World War I and World War II veterans from Southampton respectively.
- There are between 200-220 names that will need to be accommodated on each of the two walls, for a total of 400-440 names. Names are to be arranged in alphabetical order, with the following format “Surname, Given name, and one initial”.

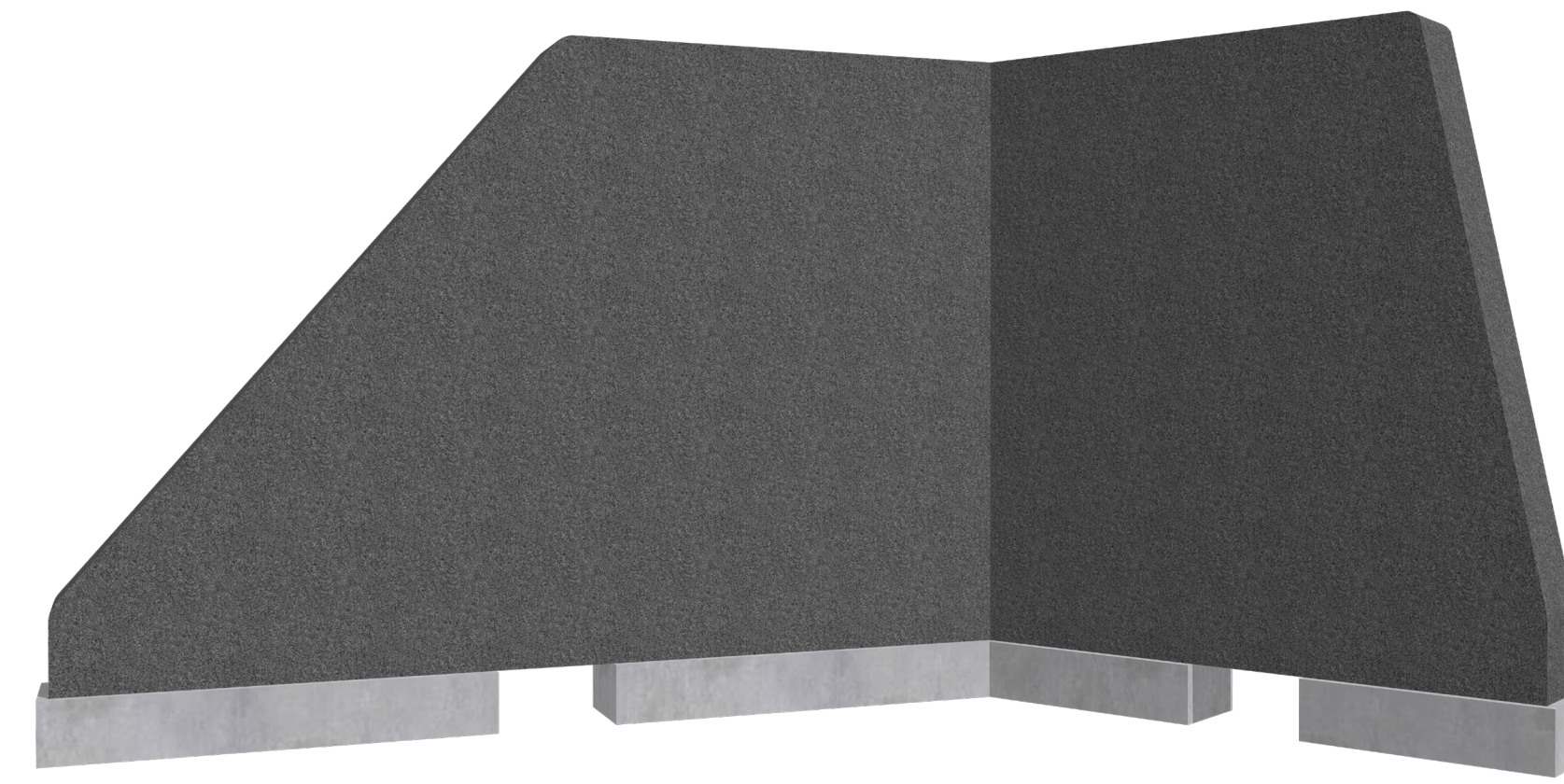
- Burnside produced an initial conceptual design/layout of the commemorative walls for the Town in April 2025, this included a general layout of the walls within the curb extensions as well as a profile view of the wall form.
- Through ongoing conversations, meetings, and discussions with the town, stone/monument manufacturers and suppliers, the design has gone through a considerable number of revisions to bring forward a final design that is constructible, cost-effective, aesthetic, thematic, and reflective of the community of Southampton.
- The final design is only at the conceptual level of design and progression into the detailed design stage will follow in the coming months.



- Each commemorative wall will be cut from a granite material (supplier recommended South African brits granite which is a darker grey) in two panels.
- Granite is a durable high-quality material that will endure with nominal maintenance considering its inherent hardness, low porosity, and can be easily cleaned.
- The granite panels will be designed in a manner that is consistent with the industry, which includes parallel vertical faces and a consistent top to bottom thickness.
- Single planes of stone with a joint at the bend location to avoid difficult joint techniques which could separate over time.
- The corners of the granite will be chamfered or machined with a round edge to avoid/minimize chipping and damage.
- Lateral loads created by wind and people leaning against the stone can be handled by gravity if the stone has enough mass. However, to resist any light vehicle impacts, stainless steel adhered pins between the granite and base concrete is required.



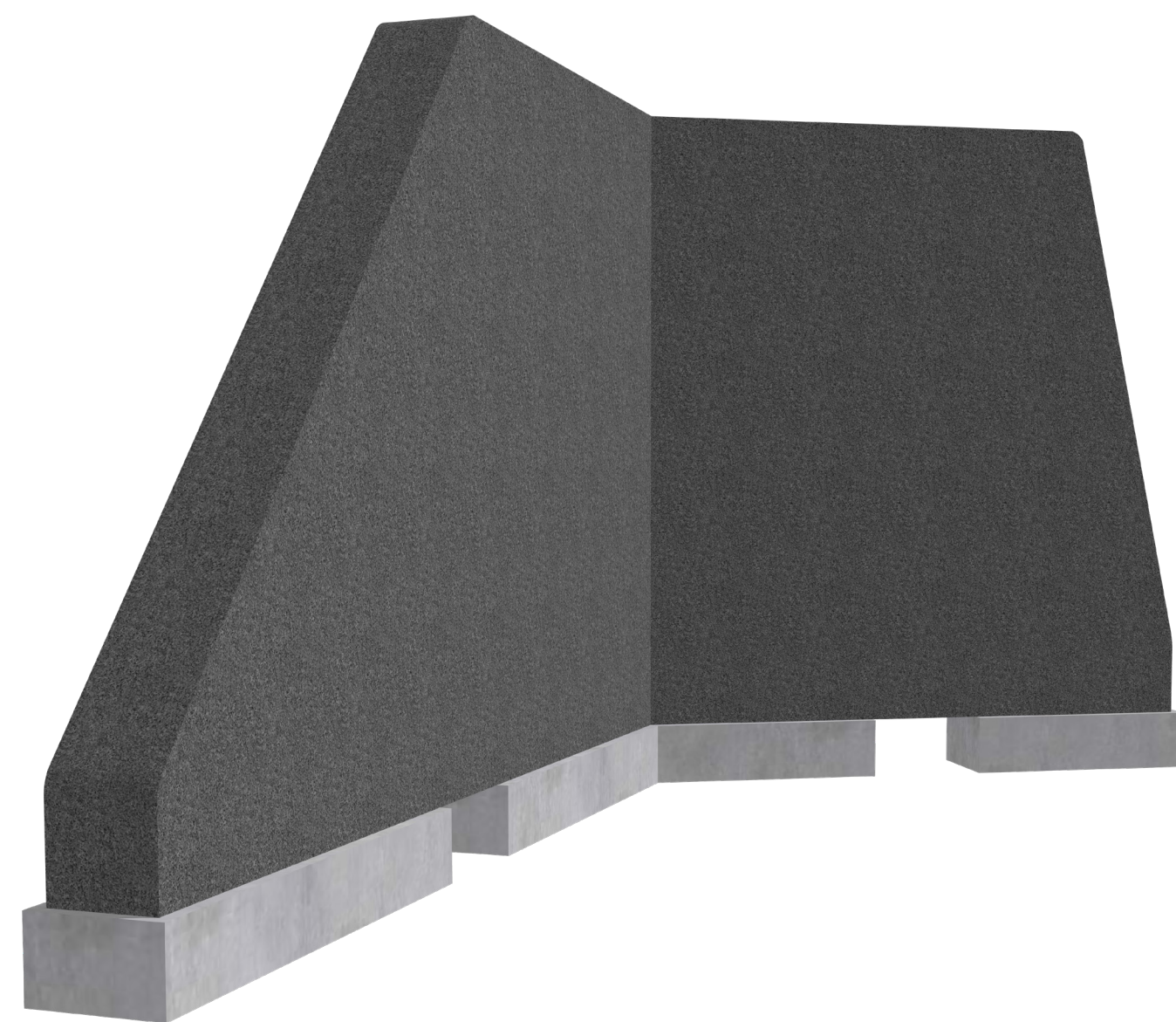
DIMENSIONS



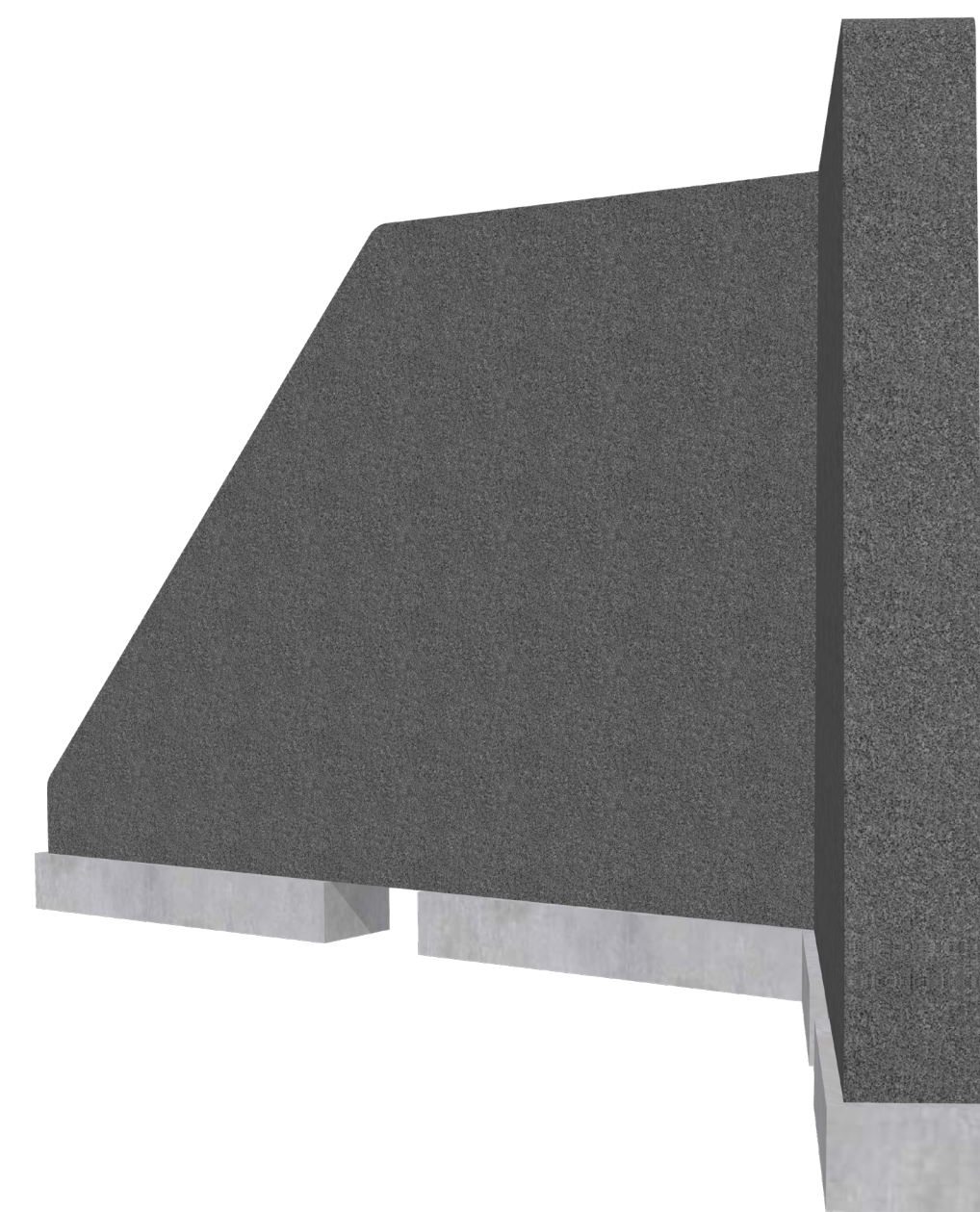
FRONT VIEW



BACK VIEW



LEFT SIDE VIEW



RIGHT SIDE VIEW

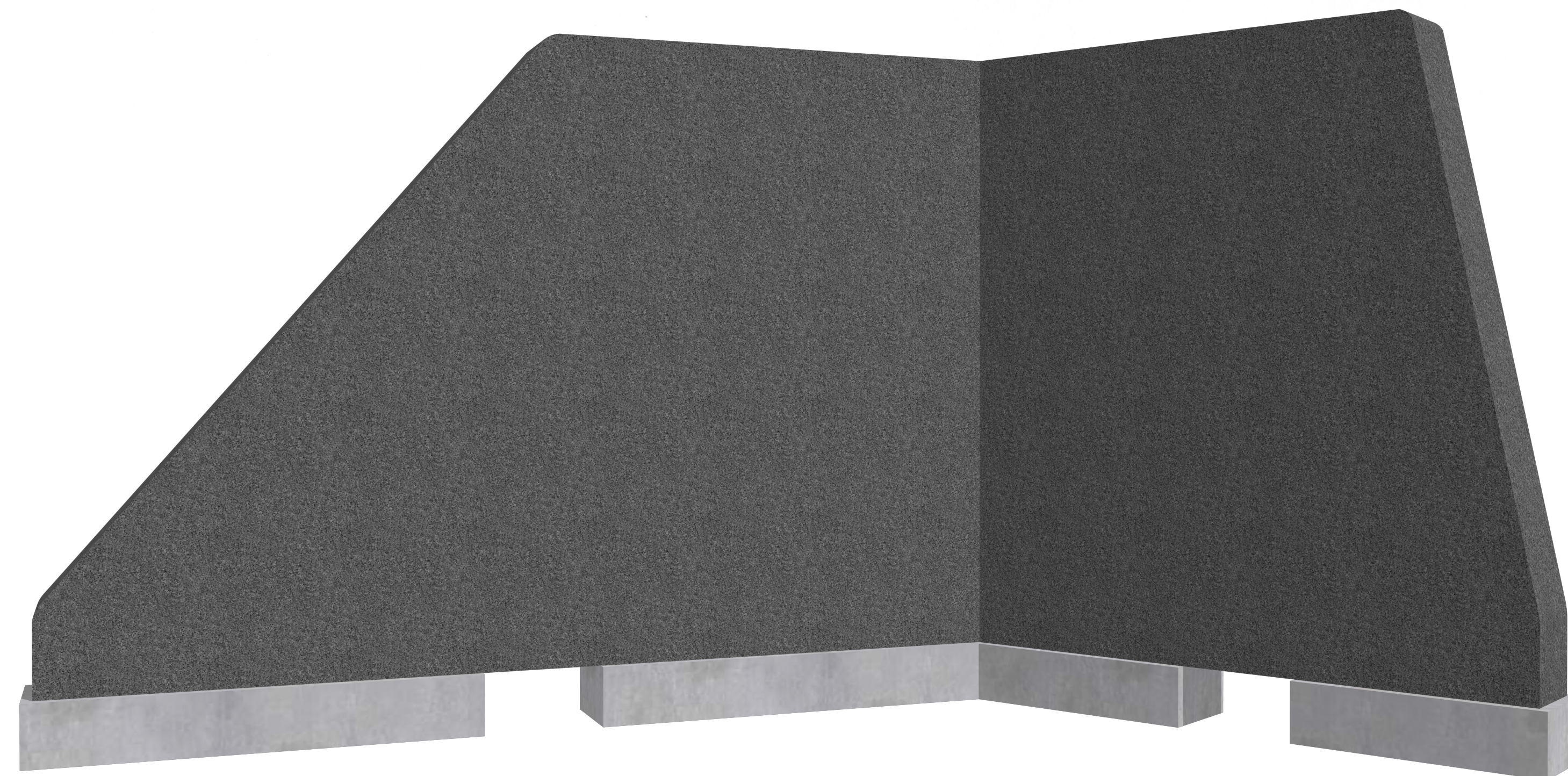
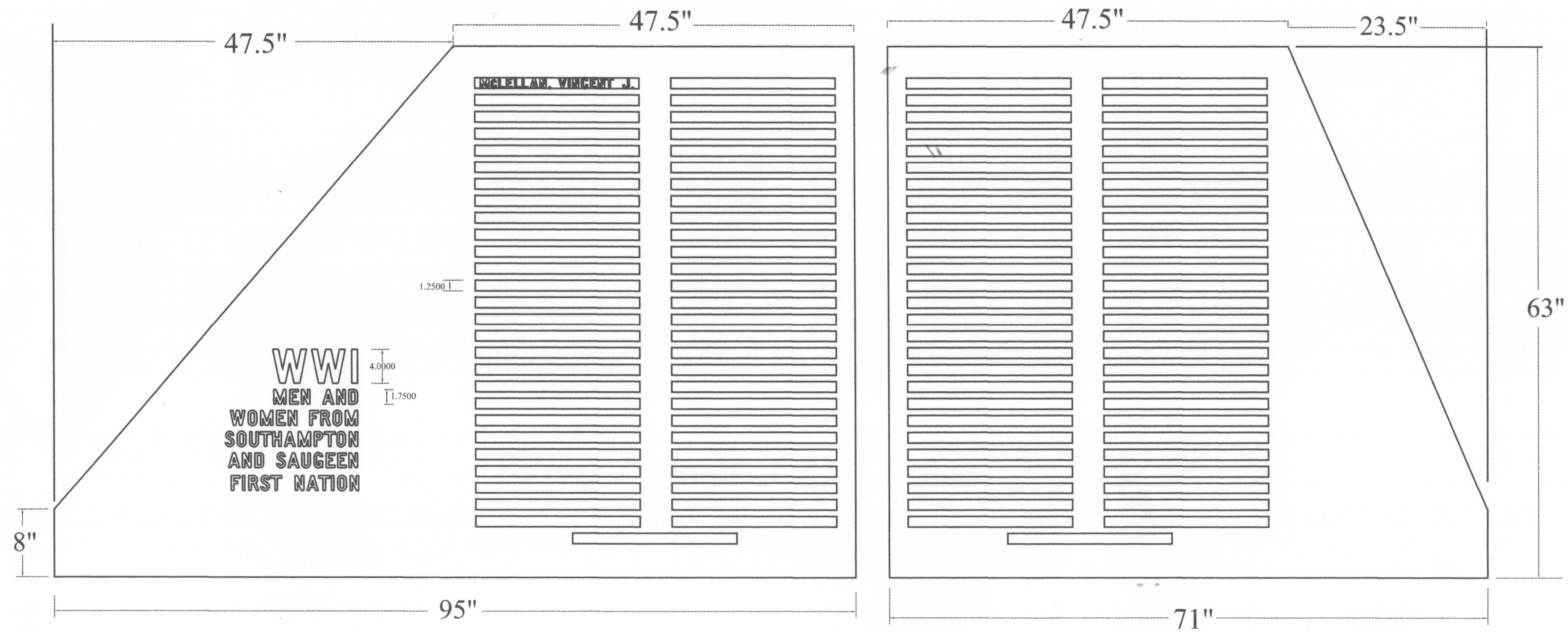


TOP VIEW

- The walls will be 1.6m tall, with three faces each 1.2m long, along with a 0.3m long sloped edge on the shorter side of the wall.
- The granite panels will be 0.2m thick from top to bottom to ensure a sufficient weight for stability and design
- The two granite panels (for each wall respectively) will be arranged/jointed together at a 120 degree angle.
- Ground lighting may be added to illuminate the wall in the detailed design stages.

- The base will be a concrete foundation wall that will extend below the frost line to ensure that the monument stays level.
- It may have a strip footing to spread overturning loads and provide a base to accurately set concrete formwork, which must be precise to match the required geometry.
- Concrete will be high quality Exposure Class C1, 35 MPa to be durable against de-icing salts.
- The concrete base may extend 100 to 150 mm above the grade and there may be a slot or space to allow surface water from the adjacent hard pavement surface to flow past the wall to the local drains, ideally avoiding puddles in front of the wall.
- This raises the finished surface of the granite above the ground and the concrete will act as a curb to reduce scraping of the finished granite. The wall will be reinforced with galvanized or stainless-steel reinforcing for durability.

- There will be 110 names of the front facing panels of the wall, and 110 names on the back facing panels of the wall, along with a title for each wall in the space identified in the design draft sketch.
- Lettering will be engraved into the surface of the granite which is optimal for maintenance, there is no brass plate needed to adhere to the granite or to be pried off and stolen for the scrap value of the metal.
- Font style and wording of titles or subheadings can be refined by Town/Council. There are standard lettering options which the supplier can provide.



- The walls will be located in the curb extensions as mentioned earlier. The back face of wall will be parallel to the edge of concrete sidewalk.
- The wall will be set back a minimum of 1.5m from the back of curb to allow for pedestrian access.
- The wall will also be setback at least 1m from the street furnishings within the curb extension space as the minimum clearance for AODA standards.

