

Firefighter Dispatch Response Times

Current Station #50

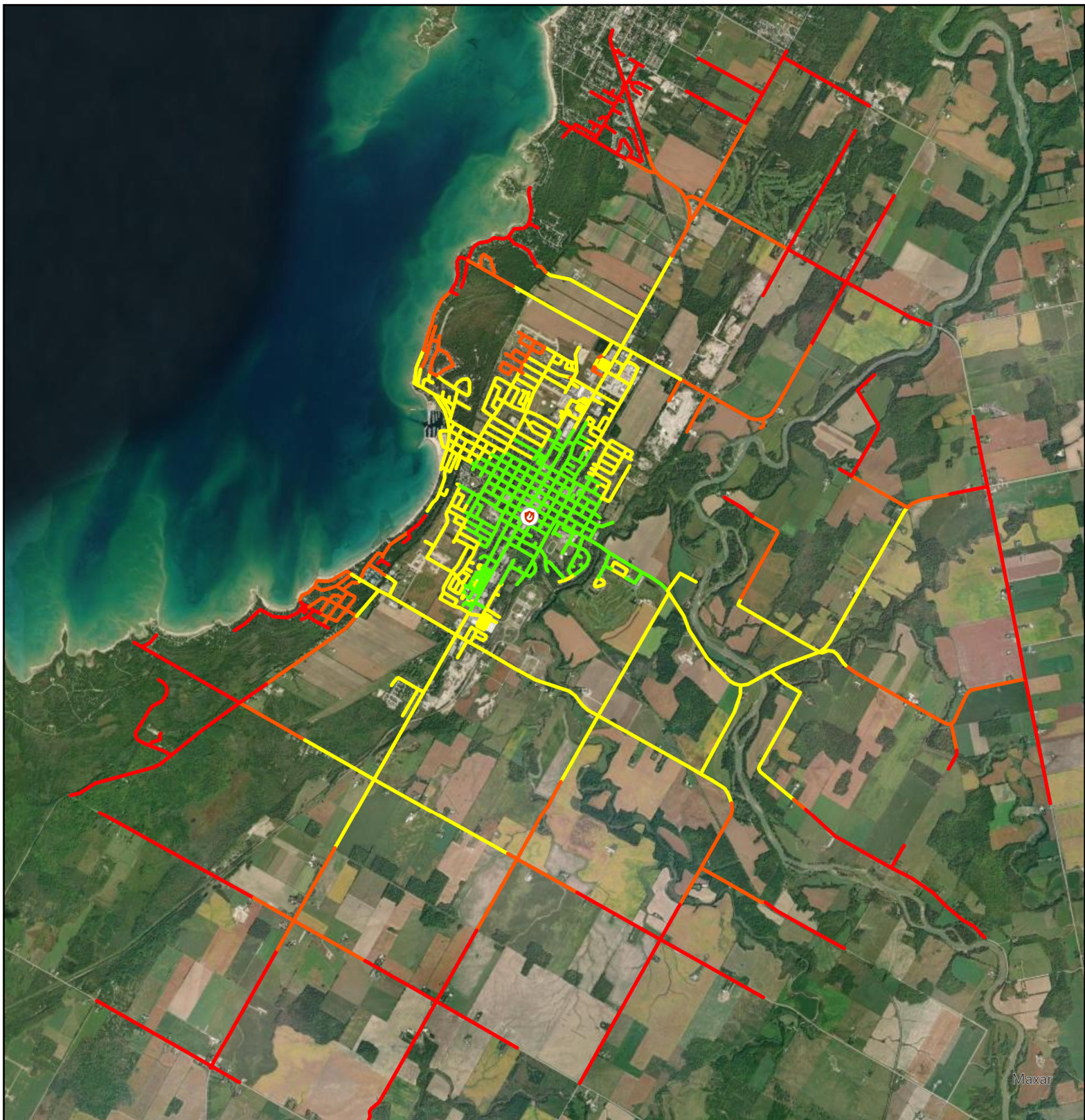
% Of Firefighters Able To Respond in 10 Minutes

- 100%
- 75%
- 50%
- 25%

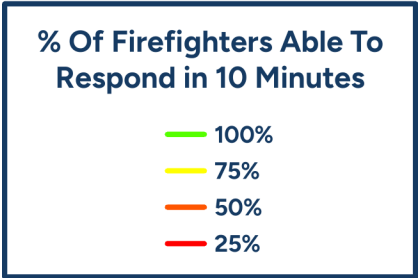
Road Length >50% Of Firefighters Able to Reach in 10 Minutes

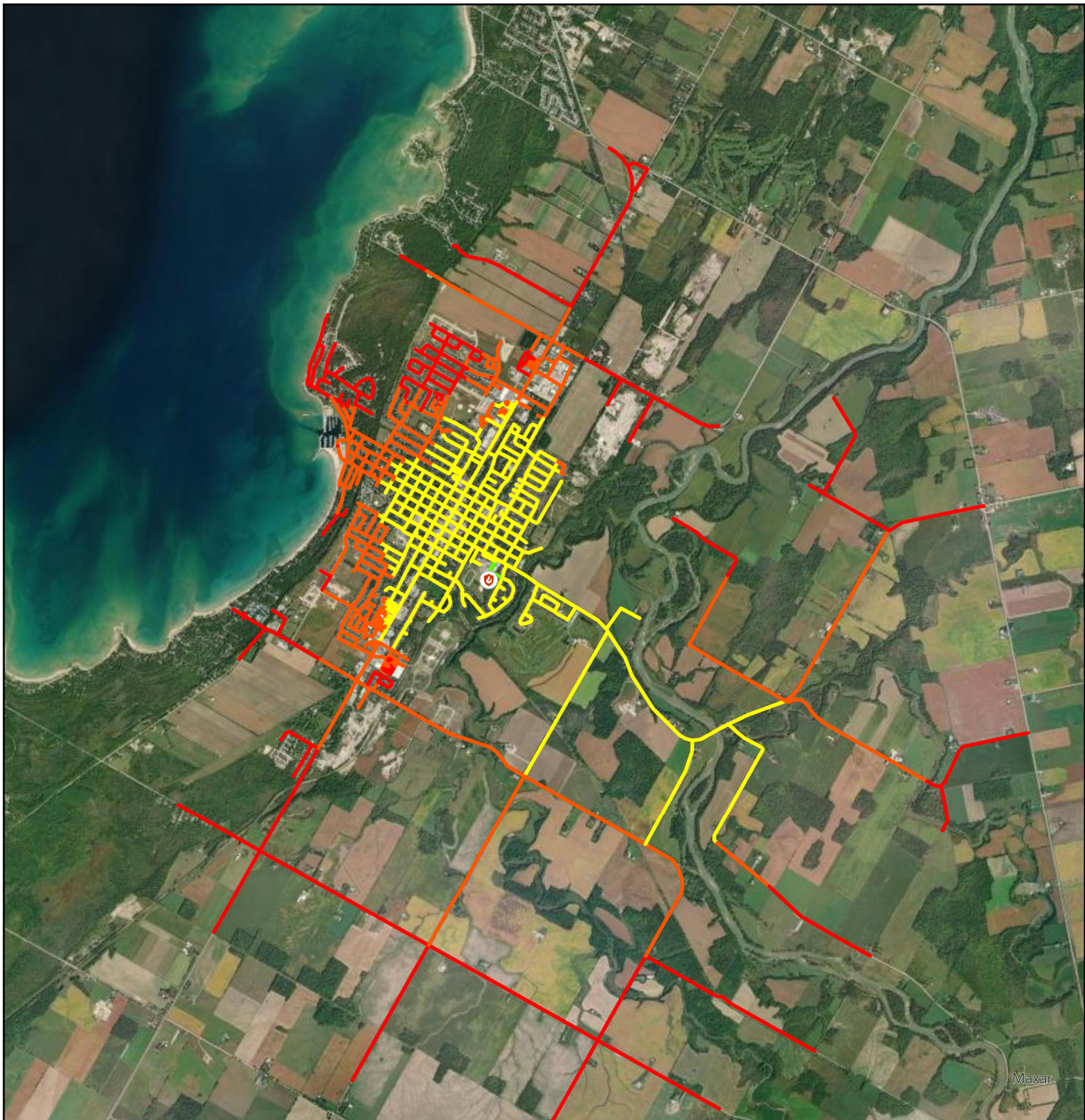
129km

Maxar



Firefighter Dispatch Response Times
Current Station #60

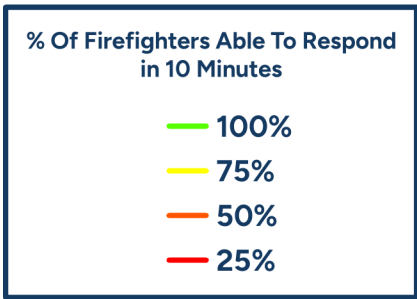


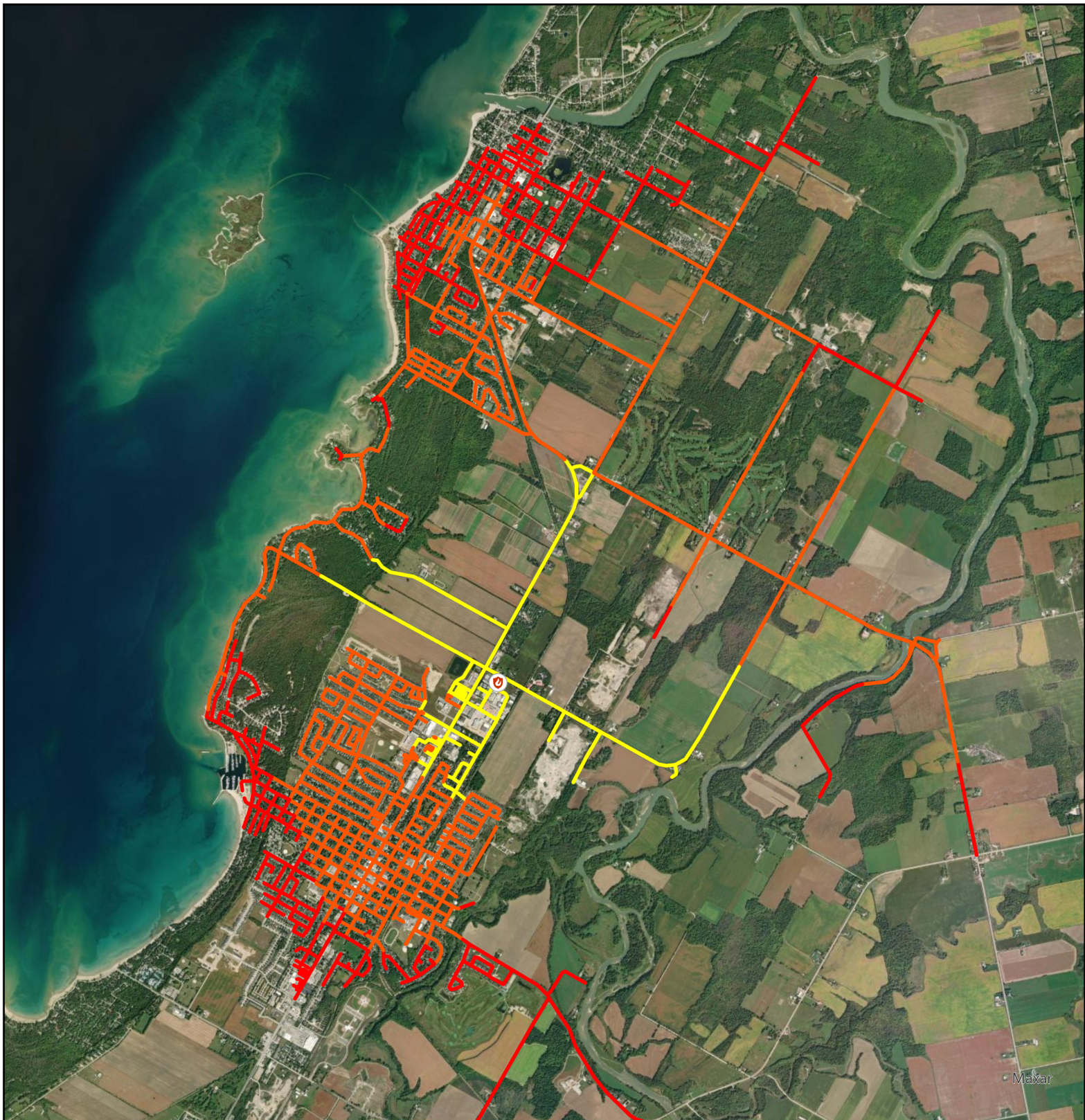


Firefighter Dispatch Response Times

Proposed Station #60

640 Mill Creek Rd





Firefighter Dispatch Response Times

Proposed Station #60

1240 Mackenzie Rd

Response times from current Station #60 firefighters

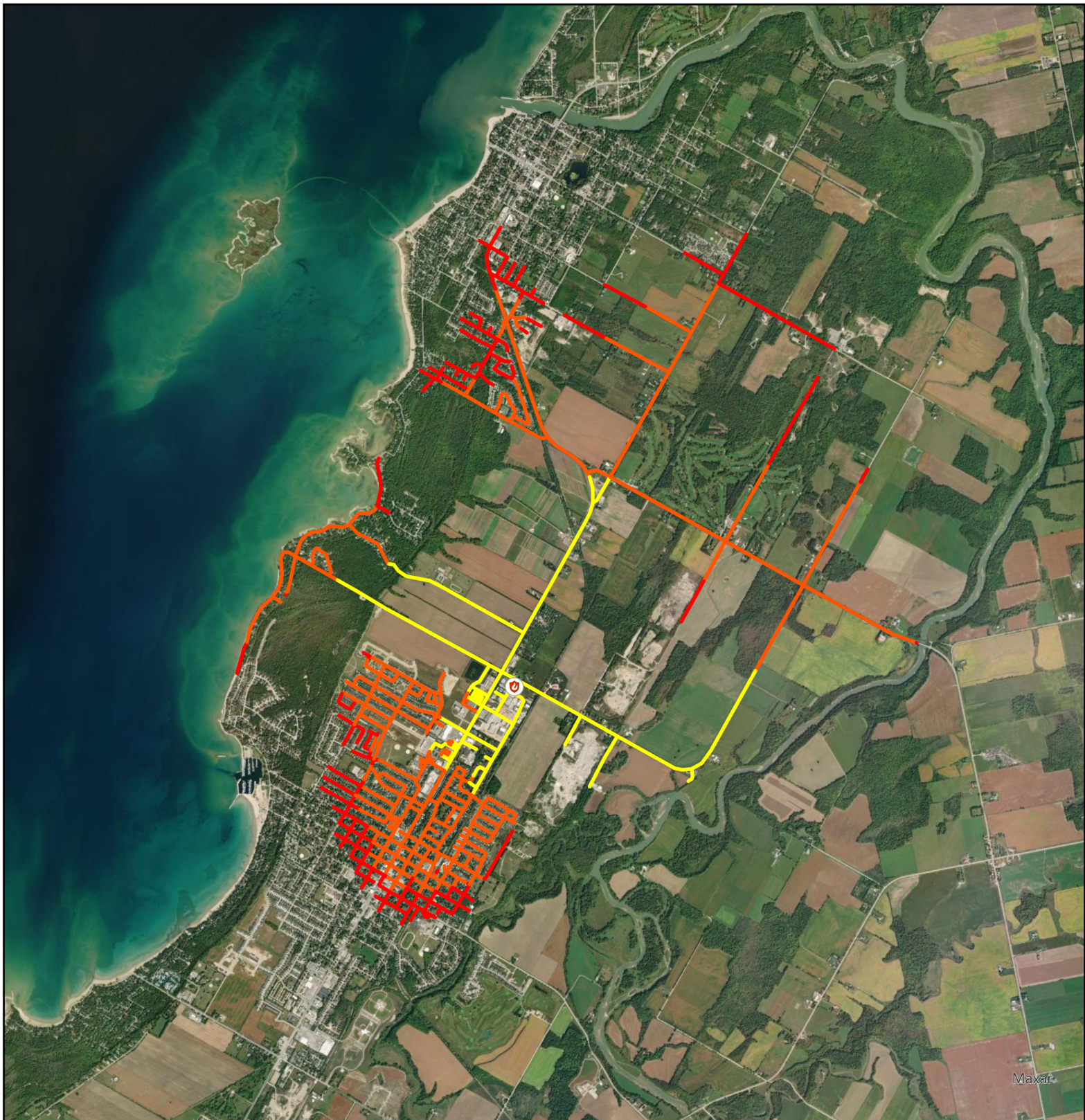
% Of Firefighters Able To Respond in 10 Minutes

- 75%
- 50%
- 25%

3 firefighters not able to reach station within 10 minutes

Road Length >50% Of Firefighters Able to Reach in 10 Minutes

118km



Firefighter Dispatch Response Times

Proposed Amalgamated Station

1240 Mackenzie Rd

Response times from current Station #50 firefighters

% Of Firefighters Able To Respond in 10 Minutes

- 75%
- 50%
- 25%

1 firefighter not able to reach station within 10 minutes

Road Length >50% Of Firefighters Able to Reach in 10 Minutes

66km

Maxar