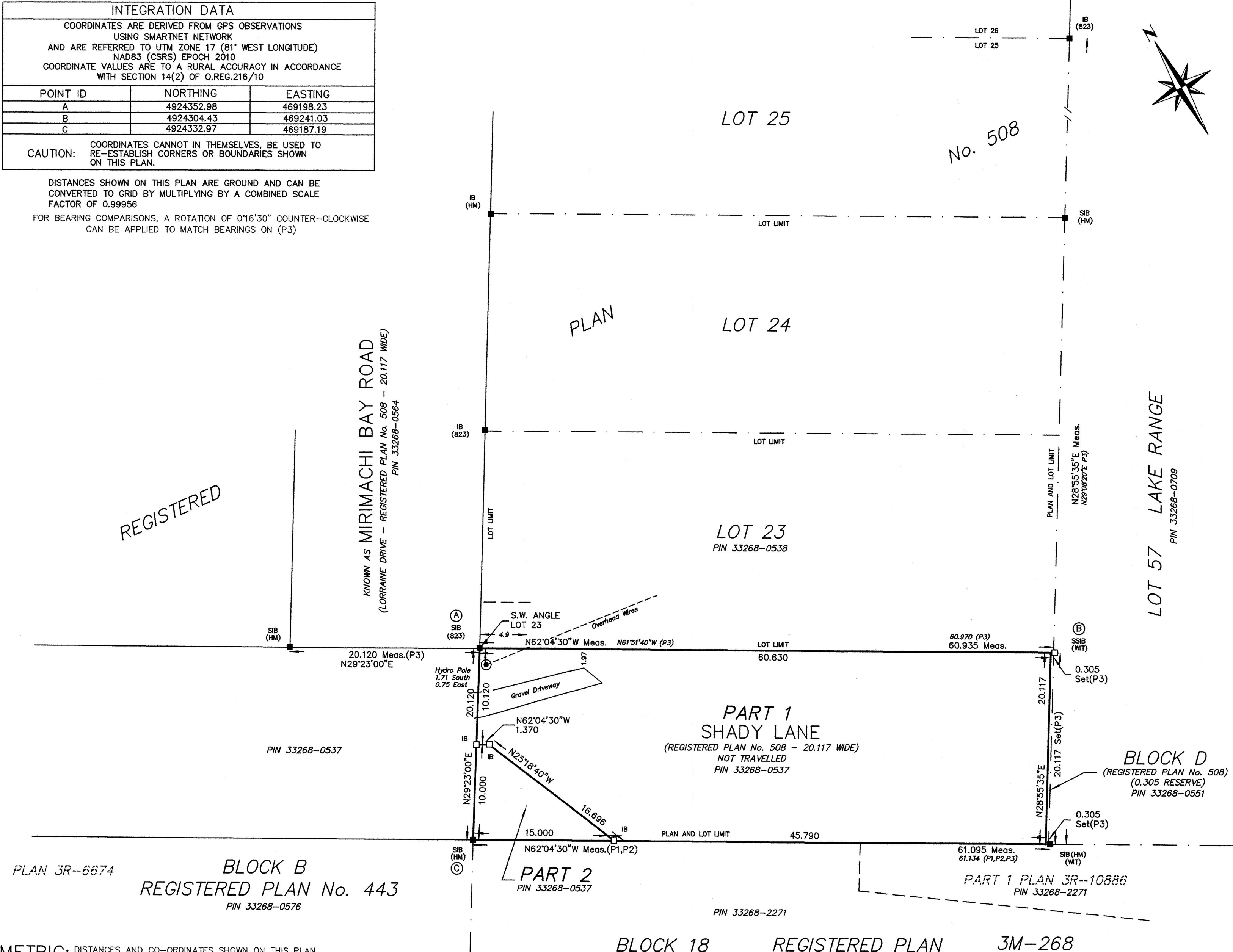


| INTEGRATION DATA                                                                                                                                                                                                                                            |            |           |
|-------------------------------------------------------------------------------------------------------------------------------------------------------------------------------------------------------------------------------------------------------------|------------|-----------|
| COORDINATES ARE DERIVED FROM GPS OBSERVATIONS<br>USING SMARTNET NETWORK<br>AND ARE REFERRED TO UTM ZONE 17 (81° WEST LONGITUDE)<br>NAD83 (CSRS) EPOCH 2010<br>COORDINATE VALUES ARE TO A RURAL ACCURACY IN ACCORDANCE<br>WITH SECTION 14(2) OF O.REG.216/10 |            |           |
| POINT ID                                                                                                                                                                                                                                                    | NORTHING   | EASTING   |
| A                                                                                                                                                                                                                                                           | 4924352.98 | 469198.23 |
| B                                                                                                                                                                                                                                                           | 4924304.43 | 469241.03 |
| C                                                                                                                                                                                                                                                           | 4924332.97 | 469187.19 |
| CAUTION: COORDINATES CANNOT IN THEMSELVES, BE USED TO<br>RE-ESTABLISH CORNERS OR BOUNDARIES SHOWN<br>ON THIS PLAN.                                                                                                                                          |            |           |

DISTANCES SHOWN ON THIS PLAN ARE GROUND AND CAN BE  
CONVERTED TO GRID BY MULTIPLYING BY A COMBINED SCALE  
FACTOR OF 0.99956  
FOR BEARING COMPARISONS, A ROTATION OF 0°16'30" COUNTER-CLOCKWISE  
CAN BE APPLIED TO MATCH BEARINGS ON (P3)



|                                                                     |                                                                                         |
|---------------------------------------------------------------------|-----------------------------------------------------------------------------------------|
| I REQUIRE THIS PLAN TO BE<br>DEPOSITED UNDER THE<br>LAND TITLES ACT | PLAN 3R—<br>RECEIVED AND DEPOSITED                                                      |
| DATE: _____                                                         | DATE: _____                                                                             |
| D.A. CULBERT<br>ONTARIO LAND SURVEYOR                               | REPRESENTATIVE FOR<br>LAND REGISTRAR FOR THE<br>LAND TITLES DIVISION OF<br>BRUCE (No 3) |

| SCHEDULE |                    |      |                        |
|----------|--------------------|------|------------------------|
| PART     | LOT/BLOCK          | PLAN | PIN                    |
| 1        | Part Of SHADY LANE | 508  | Part Of PIN 33268-0537 |
| 2        | Part Of SHADY LANE | 508  | Part Of PIN 33268-0537 |

THIS PLAN COMPRISES PART OF PIN 33268-0537

PLAN OF SURVEY  
OF PART OF  
SHADY LANE  
REGISTERED PLAN No. 508  
GEOGRAPHIC TOWNSHIP OF SAUGEEN  
TOWN OF SAUGEEN SHORES  
COUNTY OF BRUCE

SCALE 1:300  
Metric  
0 6 18 30  
2025  
D. CULBERT LTD.  
ONTARIO LAND SURVEYOR

NOTES AND LEGEND  
BEARINGS HEREON ARE GRID (SEE INTEGRATION CHART FOR DETAILS)

- DENOTES MONUMENTATION FOUND
- DENOTES MONUMENTATION PLANTED
- SIB DENOTES 2.5cm sq. STANDARD IRON BAR
- SSIB DENOTES 2.5cm sq. SHORT STANDARD IRON BAR
- IB DENOTES 1.6cm sq. IRON BAR
- WIT DENOTES WITNESS
- HM DENOTES HEWETT AND MILNE, O.L.S.
- 823 DENOTES IVAN DINSMORE, O.L.S.
- P1 DENOTES REGISTERED PLAN 3M-268
- P2 DENOTES PLAN 3R-10886
- P3 DENOTES REGISTERED PLAN No. 508
- ALL PINS ARE SUFFIXED (LT) UNLESS NOTED (R)

SURVEYOR'S CERTIFICATE:

I CERTIFY THAT:  
1) THIS SURVEY AND PLAN ARE CORRECT AND IN ACCORDANCE WITH  
THE SURVEYS ACT, THE SURVEYORS ACT AND THE LAND TITLES ACT  
AND THE REGULATIONS MADE UNDER THEM.  
2) THE SURVEY WAS COMPLETED ON THE 2ND DAY OF AUGUST, 2024

JANUARY 29, 2025  
D.A. CULBERT  
ONTARIO LAND SURVEYOR

THIS PLAN OF SURVEY RELATES TO AOLS PLAN SUBMISSION FORM  
NUMBER V-81462

|                                                                                   |                                                 |                                 |
|-----------------------------------------------------------------------------------|-------------------------------------------------|---------------------------------|
| D. CULBERT LTD.<br>ONTARIO LAND SURVEYOR<br>GODERICH, ONTARIO PHONE: 519-524-5321 |                                                 | ONTARIO<br>DCL<br>LAND SURVEYOR |
| DRAWN BY: BDGS<br>CHECKED BY: DAC                                                 | DIGITAL FILE: SG2498R1<br>FILE No: SAU-0508-0-2 | PLAN No:<br>2-GZ-2590           |