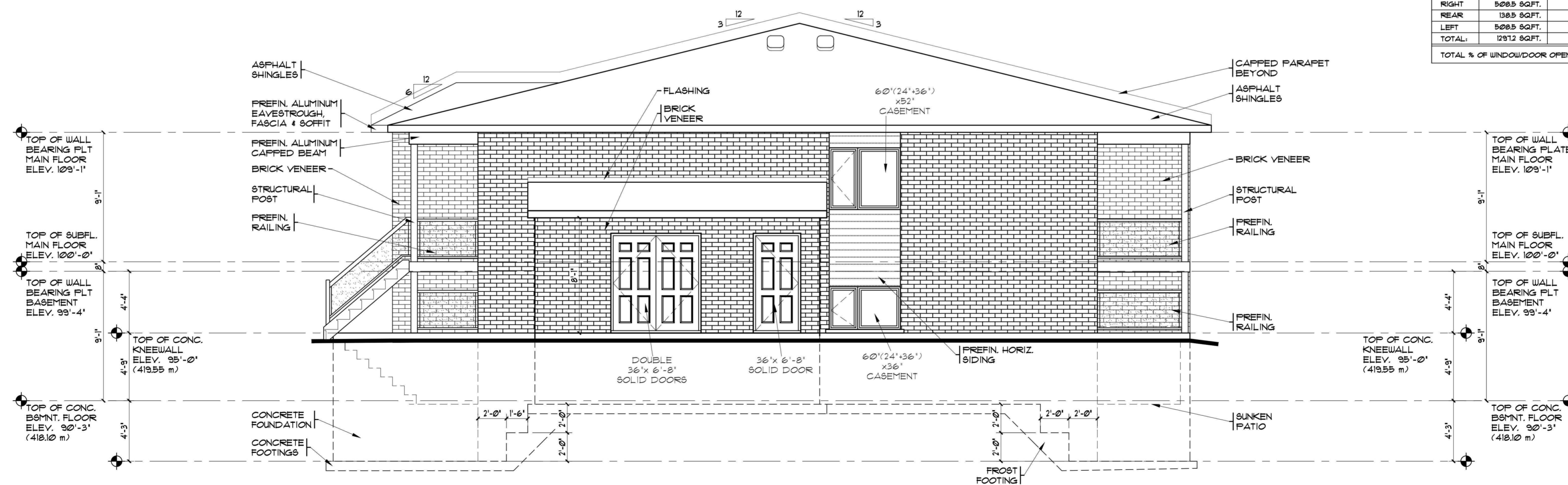


**FRONT ELEVATION**

**EEDS Calculations**

UPPER INTERIOR UNITS:			UPPER END UNITS:		
IN ACCORDANCE WITH 98-12 SECTION 3.1 OF THE 2012 ONTARIO BUILDING CODE			IN ACCORDANCE WITH 98-12 SECTION 3.1 OF THE 2012 ONTARIO BUILDING CODE		
ELEVATION	PERIPHERAL WALL AREA	TOTAL WINDOW/DOOR OPENING	ELEVATION	PERIPHERAL WALL AREA	TOTAL WINDOW/DOOR OPENING
FRONT	206.7 SQFT.	100.0 SQFT.	FRONT	216.8 SQFT.	10.0 SQFT.
RIGHT	56.7 SQFT.	0 SQFT.	RIGHT	56.7 SQFT.	28.8 SQFT.
REAR	206.7 SQFT.	51.3 SQFT.	REAR	216.8 SQFT.	51.3 SQFT.
LEFT	56.7 SQFT.	0 SQFT.	LEFT	56.7 SQFT.	0 SQFT.
<b>TOTAL:</b>	<b>1027.5 SQFT.</b>	<b>151.3 SQFT.</b>	<b>TOTAL:</b>	<b>1027.5 SQFT.</b>	<b>151.3 SQFT.</b>
TOTAL % OF WINDOW/DOOR OPENINGS: 82%			TOTAL % OF WINDOW/DOOR OPENINGS: 10.0%		

LOWER INTERIOR UNITS:			LOWER END UNITS:		
IN ACCORDANCE WITH 98-12 SECTION 3.1 OF THE 2012 ONTARIO BUILDING CODE			IN ACCORDANCE WITH 98-12 SECTION 3.1 OF THE 2012 ONTARIO BUILDING CODE		
ELEVATION	PERIPHERAL WALL AREA	TOTAL WINDOW/DOOR OPENING	ELEVATION	PERIPHERAL WALL AREA	TOTAL WINDOW/DOOR OPENING
FRONT	141.7 SQFT.	38.8 SQFT.	FRONT	508.5 SQFT.	38.8 SQFT.
RIGHT	508.5 SQFT.	0 SQFT.	RIGHT	508.5 SQFT.	18.4 SQFT.
REAR	138.5 SQFT.	41.6 SQFT.	REAR	141.6 SQFT.	41.7 SQFT.
LEFT	508.5 SQFT.	0 SQFT.	LEFT	508.5 SQFT.	0 SQFT.
<b>TOTAL:</b>	<b>1291.2 SQFT.</b>	<b>80.4 SQFT.</b>	<b>TOTAL:</b>	<b>1914.4 SQFT.</b>	<b>98.9 SQFT.</b>
TOTAL % OF WINDOW/DOOR OPENINGS: 6.2%			TOTAL % OF WINDOW/DOOR OPENINGS: 7.5%		



**RIGHT SIDE ELEVATION**

**LOWER LEVEL**

AREA OF EXPOSED BUILDING ENVELOPE	=	sq.ft.
BUILDING ENVELOPE PROTECTED BY GLAZING	=	320.1 sq.ft.
OPENING AREA PROTECTED BY GLAZING	=	sq.ft.
PROPOSED UNPROTECTED OPENING AREA	=	64.0 sq.ft.
PROPOSED UNPROTECTED OPENING AREA	=	sq.ft.
OPENING AREA	=	15.0 sq.ft.

**NOTE:**  
FOR RAINWATER DISCHARGE, REFER TO MUNICIPAL REQUIREMENTS

**NOTE:**  
ALL STAIR RAMP, HANDRAILS AND GUARDS SHALL CONFORM TO O.B.C. 9.8. AND THE SUPPLEMENTARY STANDARDS SBT

**NOTE:**  
EVERY WINDOW WELL SHALL BE DRAINED TO THE FOOTING LEVEL OR OTHER SUITABLE LOCATION AS PER O.B.C. 9.14.6.3.

**NOTE:**  
EXTERIOR LIGHTING MUST BE INSTALLED AT EVERY ENTRANCE TO BUILDINGS OF RESIDENTIAL OCCUPANCY AS PER O.B.C. 9.34.2.1

**NOTE:**  
EVERY FLOOR LEVEL CONTAINING A BEDROOM SHALL BE PROVIDED WITH AT LEAST ONE OUTSIDE WINDOW THAT CONFORMS TO O.B.C. 9.3.10.1 WITH AT LEAST 0.35m<sup>2</sup> UNOBSTRUCTED OPEN PORTION WITH NO DIMENSION LESS THAN 380mm. AND IF OPENING INTO A WINDOW WELL, MUST HAVE A CLEARANCE OF NOT LESS THAN 550mm IN FRONT OF THE WINDOW