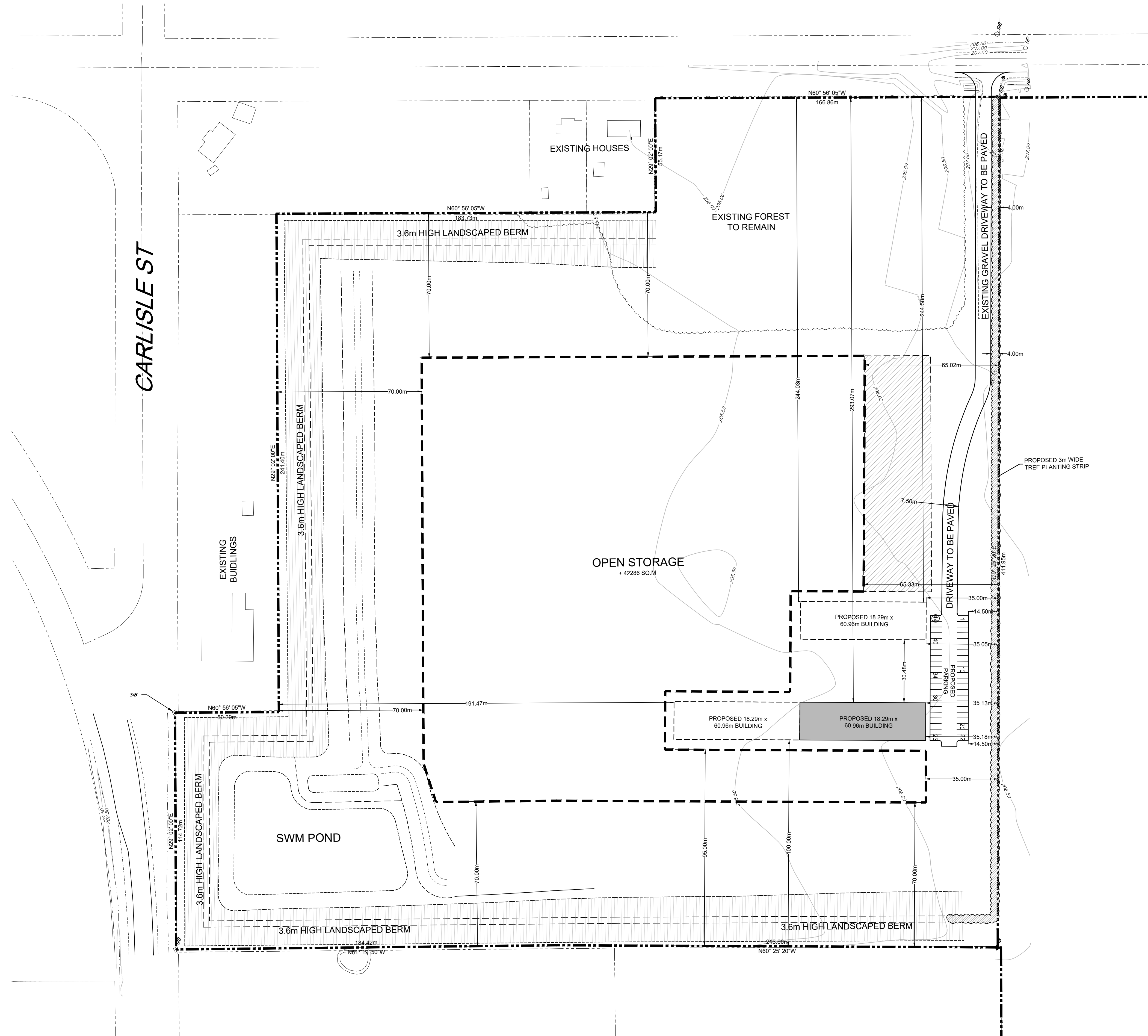
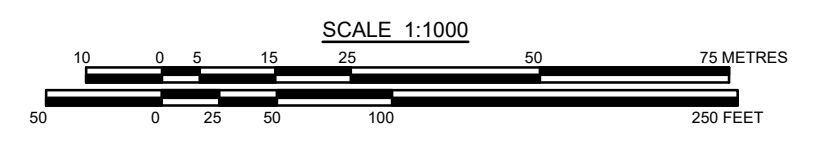
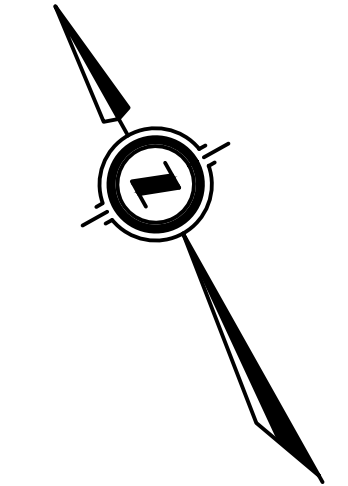


H:\Corsons_Supply\05027- Expansion\Drawings\Submissions\Second_Submission_2024-07-16\05027_Corson's_Supply_Expansion_2024-10-17.dwg



CAUTION:
THE POSITION OF POLE LINES, CONDUITS, WATERMANS, SEWERS AND OTHER UNDERGROUND AND OVERGROUND UTILITIES AND STRUCTURES IS NOT NECESSARILY SHOWN ON THE DRAWINGS, AND, WHERE SHOWN, THE ACCURACY OF THE POSITION OF SUCH UTILITIES AND STRUCTURES IS NOT GUARANTEED. BEFORE STARTING WORK, THE CONTRACTOR SHALL INFORM THEMSELVES OF THE EXACT LOCATION OF ALL SUCH UTILITIES AND STRUCTURES, AND SHALL ASSUME ALL LIABILITY FOR DAMAGE TO THEM.

Notes

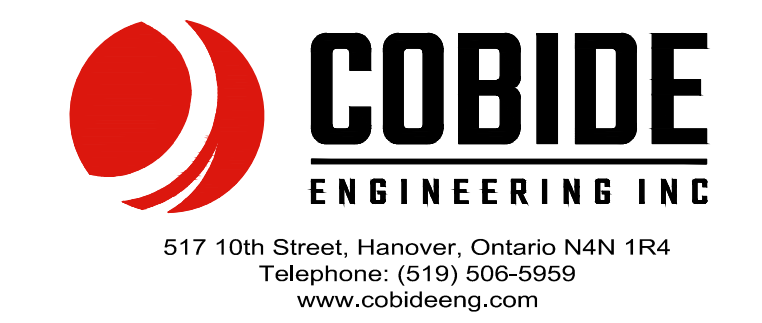


Benchmark Information

No.	DATE	DESCRIPTION	BY	APPD

No.	DATE	DESCRIPTION	BY	APPD
1	MAY 13/24	REVISED FIRST SUBMISSION	ID	TLB
REVISION / ISSUE				

Seal not valid unless signed and dated



Title: **INDUSTRIAL EXPANSION
TOWN OF SAUGEEEN SHORES
DEVELOPMENT SITE PLAN**

Client:	2128080 Ontario Inc.		
Design:	TLB	Scale:	1:1000
Drawn:	ID	Approved:	
Checked:	TLB		
Date:	MAY 2024		
DRAWING No.	05027-SP1		